

University of Mississippi

eGrove

Daily Mississippian (all digitized issues)

Daily Mississippian

12-6-2019

December 6, 2019

The Daily Mississippian

Follow this and additional works at: <https://egrove.olemiss.edu/thedmonline>

Recommended Citation

The Daily Mississippian, "December 6, 2019" (2019). *Daily Mississippian (all digitized issues)*. 39.
<https://egrove.olemiss.edu/thedmonline/39>

This Newspaper is brought to you for free and open access by the Daily Mississippian at eGrove. It has been accepted for inclusion in Daily Mississippian (all digitized issues) by an authorized administrator of eGrove. For more information, please contact egrove@olemiss.edu.

THE DAILY MISSISSIPPIAN

Friday, December 6, 2019

theDMonline.com

Volume 108, No. 42

THE DAILY MISSISSIPPIAN
Friday, December 6, 2019

LUKE FIRED

Players talk of leaving after unexpected decision; humiliating loss, disappointing seasons lead fans to embrace change

BOYCE CLIMBING
The new chancellor, Glenn Boyce, is expected to take office in January. He is seen here with other officials.

SPECIAL BACK TO SCHOOL SECTION INSIDE
THE DAILY MISSISSIPPIAN
Friday, December 6, 2019

173 Days

The university learned about this exact place in March. Why is the inscription taking so long?

UM has not sent plans to relocate statue

THE DAILY MISSISSIPPIAN
Friday, December 6, 2019

MAKIN' BACON

Ole Miss handles Arkansas in 31-17 victory

MS children in day care need 7 vaccines. University students need 1.

THE DAILY MISSISSIPPIAN
Friday, December 6, 2019

For Ronzo

Alcohol decision expected next week

Oxford voting machine malfunctions

Soccer leaning on young talent

THE DAILY MISSISSIPPIAN
Friday, December 6, 2019

26

REPORTS OF

RACISM WHITE POWER SYMBOLS HOMOPHOBIA MISOGYNY PROFILING ABLEISM SLURS BIAS

Boyce misses JPS

It's been a long semester

And we're tired. See the top stories of this historic semester on pages 4 and 5.

THE DAILY MISSISSIPPIAN
Friday, December 6, 2019

Boyce's era begins

It's Glenn Boyce's first school day as chancellor. Some want it to be his last.

Campus organizations make demands of IHL Board

THE DAILY MISSISSIPPIAN
Friday, December 6, 2019

IHL picks its chancellor

Search process cut short; insider Glenn Boyce selected

Coming Home
Meet the king and queen and Mr. and Miss Ole Miss

THE DAILY MISSISSIPPIAN
Friday, December 6, 2019

Is it payday yet?

The NCAA will "enhance" some opportunities for student-athletes to make money

Tisdale looks to transfer

THE DAILY MISSISSIPPIAN
Friday, December 6, 2019

Cheers!

Meet the man who wants to be the next chancellor

THE DAILY MISSISSIPPIAN
Friday, December 6, 2019

Enrollment is down, again

Chancellor's salute

Krauss stresses free speech

Panhellenic considers moving recruitment before school

MASON SCIONEAX
thedmnews@gmail.com

College Panhellenic (CPH) is considering plans to move recruitment to the week before the fall semester begins in 2020 with a decision potentially coming as early as next Friday. The

Interfraternity Council (IFC) is not considering moving their recruitment before classes begin. According to Arthur Doctor, director of the Office of Fraternal Leadership and Learning, the potential change is a result of "feedback we (FLL) received from a number of stakeholders on

campus." Formal sorority recruitment is held typically five weeks into the semester and has been since the mid-90s, according to Doctor. FLL sent a collection of dates to the 10 Panhellenic chapters to vote on, but ultimately FLL will make the decision on when recruitment

will happen. "There's a lot that goes into it. Recruitment is such a large entity on campus, so we try to reach as many campus partners as possible," Doctor said. "We let them know those dates that are being considered. One aspect of that is the chapters voting on their preference, and we move forward

from there and make the final decision." Ashton Daly, the recruitment chair for Kappa Kappa Gamma, said that her sorority's adviser told her of the possible change before Thanksgiving break. "I think (recruitment) will be before school," Daly said. If the date before school

Hudson plans to return to MS following Rhodes scholarship

KENNETH NIEMEYER

thedmnews@gmail.com

When senior English education major Arielle Hudson learned that she had received the Rhodes Scholarship, she immediately began to wonder how she could use it to make a difference.

Hudson originally proposed to study comparative social policy and international education at the University of Oxford, but now plans to pursue a bachelor's degree in jurisprudence so that she can help change educational policies in Mississippi.

"I'm from Tunica, Mississippi, which is on the outskirts of the Mississippi Delta," Hudson said. "...Seeing the education system there is just something that was really valuable to me because I immediately noticed all of the disparities and inequities that exist there. That's something that I really want to go back and change to make a positive impact on as a teacher and as a future educational policymaker."

Hudson was recently named the first African American woman to receive the Rhodes Scholarship from the University of Mississippi. Minorities make up the majority of this year's 32 recipients, and last year, Jaz Brisack was named the first woman from UM to receive that honor.

32 American undergraduate students are chosen each year for the prestigious honor, which provides all expenses for two or three years of study at the University of Oxford in England.

UM is now tied with Vanderbilt University as the SEC school with the most Rhodes Scholarship recipients at 27 apiece.

After transferring to the Mississippi School for Math and Sciences in her junior year of high school, Hudson decided to major in English education because of the humanities education MSMS gave her.



PHOTO COURTESY: OLE MISS COMMUNICATIONS.

Arielle Hudson was named the 27th Rhodes Scholar from the University of Mississippi.

"Just having even that expanded curriculum in the humanities and the arts; MSMS actually influenced me, even more, to want to do English because I've always been an English person, and I've always loved reading," Hudson said.

Hudson has been competing in pageants since the age of 10. This summer, she was named USA National Miss Hospitality State and finished top 15 in the USA National Miss pageant.

"After my first one, I actually took a break from pageants and I stopped because of the financial hardship," Hudson said. "Pageants are expensive and I didn't want my mom, who's a single parent, to have to fork over all that money by herself."

Hudson came to the university on the Mississippi Excellence in Teaching Program scholarship, and decided to use

refund money from her scholarships, as well as donations and sponsorships to help fund her participation in pageants.

"When I got to college, I started to feel like there was something missing from my life that I used to have, and I started reflecting on that and figured out that it was pageants," Hudson said.

She plans to continue to be involved in pageants as a coach after she returns to the United States.

"I really started doing pageants because of the representation," Hudson said. "I didn't see women who look like me when I watch Miss USA and Miss Universe, and so I thought that was something that was very important for other individuals to see."

The Black Student Union is the first student organization

that Hudson got involved with on campus, and she served as vice president and president of the organization for the past two years.

"Those are all some of the first people that I met when I came to the university through the MOST conference program, and so coming here and having that close-knit relationship to them develop throughout the years and moving up in BSU is every important and helpful for me," Hudson said.

Tonika Ingram is the coordinator for the Mississippi Outreach Scholastic Talentconference and has served as the adviser for the Black Student Union for the past two years. She said that Hudson has uniquely positioned herself for success.

"Sometimes it's easy to get caught up in doing all of the things, but I think Arielle really is passionate about everything that she chooses to spend her time doing, which then results in her doing really exceptional work," Ingram said.

Ingram said that Hudson receiving the Rhodes Scholarship was important for representation, but it was even more important because she did it at Ole Miss.

"I think it's even more unique to be at an institution like the University of Mississippi and to see students really fight beyond some of the barriers that they experience in the classroom, outside of the classroom, in the city and be able to accomplish something as great as being a Rhodes Scholar," Ingram said. "She's a phenomenal student and scholar outside of those identities, but it makes it even more rewarding for students to see her in this space."

Tim Dolan, director of the Office of National Scholarship Advisement, helped both Hudson and Brisack apply for the Rhodes Scholarship.

"It's rewarding. The Rhodes

Scholarship tends to be dominated by Ivy League schools," Dolan said. "Half of the grantees this year went to students that are at Ivy League Schools so I think it's affirming that Jaz and Arielle, who would be competitive at other schools, choose to come to the University of Mississippi and it testifies to how strong the faculty and staff and programs are here."

Dolan said that seeing students like Brisack and Hudson succeed helps the university recruit more students.

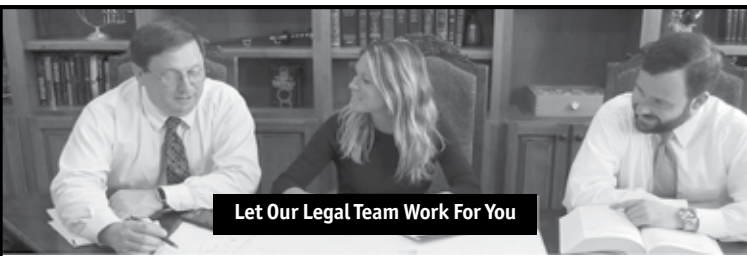
"We are committed, as the flagship University of Mississippi, to serving residents of the state and so it makes me happy to see that women and underserved students apply and are competitive and successful for these sorts of scholarships," Dolan said.

Hudson said that she first learned about the scholarship while in high school at MSMS because the first African American woman from Mississippi to receive the award was also a graduate of the school. She was encouraged to apply for the scholarship after seeing her friends at the university, including Brisack, apply for the honor.

"(Seeing them) I guess kind of set in the reality that this was something that I could actually apply for and that I actually qualified to apply for, but actually receiving it; that was pretty shocking, and I think it still is," Hudson said.

Ingram said that the Rhodes Scholarship is a testament to Hudson's hard work, and she's excited to see the work that Hudson will do in the future after her time at Oxford is complete.

"Rhodes Scholarship isn't something that you just get, and then it's over," Ingram said. "This is really where her work is going to begin."



Let Our Legal Team Work For You

Defense of Persons charged with:

D.U.I. - 1st, 2nd, 3rd or 4th Offense, Public Drunk, M.I.P., Fake I.D., Simple Assault
Possession of Paraphernalia and/or Drugs
Possession with Intent, Sale of Drugs, Aggravated Assault
and All Other Misdemeanor and Felony Charges

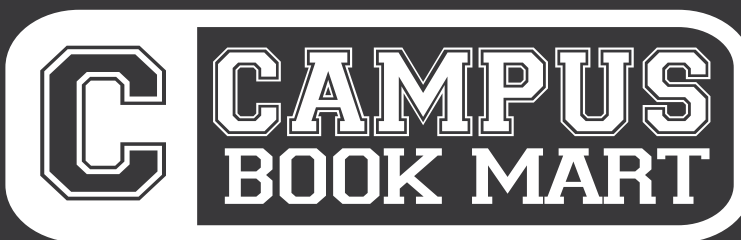
662.281.0438

If you have been charged with a criminal offense call our office to schedule a free consultation regarding the criminal charges which have been brought against you.

Weekend and after-hours appointments available for legal emergencies.



garrettfridayandgarner.com
1205 Office Park Drive B, Oxford, MS
M-TH 8am-5pm, F 8am-4pm



2128 Jackson Ave W | Across from Cook Out

GOING OUT OF BUSINESS SALE

CLOTHING & GIFTS 75% OFF

EVERYTHING MUST GO!



campusbookmart.com/um

UM earns bee certification

MADDY QUON

thedmnews@gmail.com

The University of Mississippi has become the 81st educational institution in the country to be certified as an affiliate of the Bee Campus USA program.

Bee Campus USA is designed to marshal the strengths of educational campuses to benefit pollinators. Ole Miss joins more than 150 cities and campuses throughout the country in improving their landscapes.

Bee Campus USA and Bee City USA are initiatives of the Xerces Society for Invertebrate Conservation, a nonprofit organization based in Portland.

Its mission is to provide a healthy habitat, free of pesticides to sustain pollinators. Pollinators, including bumble bees, butterflies, moths, beetles and flies, are responsible for the reproduction of

almost 90% of the world's flowering plant species.

According to the Pesticide Action Network, pollinators such as bats and bumble bees are facing catastrophic declines due to pesticides, poor nutrition, habitat loss and increased pathogen exposure. Scientists have found that bees can be poisoned when flying through pesticide-contaminated planter dust.

A United Nations report showed that more than 70% of the 100 crops that provide 90% of the world's food rely on bees for pollination. Honey bees remain the most economically important pollinator, contributing over \$19 billion to the United States economy.

Honey bees are also considered to be the "canary in the coal mines." The decline of the honey bee indicates broader degradation and a collapse in biodiversity.



FILE PHOTO: BILLY SCHUERMAN / THE DAILY MISSISSIPPIAN

Recruitment next year could potentially begin before the first day of school on Aug. 16, 2020.

RECRUITMENT continued from page 1

is selected, recruitment will begin Sunday, Aug. 16, 2020, eight days before classes start on Aug. 24.

Daly surmised that the proposed change is a result of students falling behind on their school work. Recruitment is usually held about a month into the fall semester, and this year it fell one week before midterm exams.

"I met with a professor, and he said that he had a teacher meeting with Panhellenic about (recruitment) just because so many students were struggling to recover after that one week," Daly said.

When asked if the FLL office reached out to professors concerning academic strain brought on by recruitment week, Doctor said that they "fielded comments and concerns from a number of campus stakeholders."

Kellie Kampen, a junior Chi Omega member, said that recruitment this year was especially hectic, and a change would bring relief to both potential new members and active members.

"It's better for everybody to do it before school starts, just to get it out of the way," Kampen said. "During the school year, it's normally a big test week. Like this year I had three tests the week of rush, and I can I can only imagine the freshmen. What if they have a late class and have to miss an event?"

Daly said that this issue has been considered in the current push to move rush week earlier, but since each Southeastern Conference school has also moved rush to before the semester, there would be no outlet for transferring students at another SEC school.

"I'm sure the university will find a way to keep people from (transferring)," Daly said, "especially when we're the only school that I know of that rushes in the middle of fall semester, so even if they did drop out, I don't know really where they would go."

Kappa Kappa Gamma member Bella Garofalo argued that the timing of rush would not be as inconvenient if CPH eased the so-called "nine-month rule," which took effect after she went through recruitment. According to this

rule, current sorority members cannot contact incoming freshmen from Jan. 1 of the year they plan to matriculate until recruitment week.

"I've always thought if they changed it, and you could talk to older girls, then it wouldn't be bad for those six weeks," Garofalo said. "Because I was coming out-of-state, I met so many girls on my floor because I wasn't thrown into a sorority right away, and limited to meeting girls in my sorority. So, that's what I liked about those six weeks (before rush)."

Delta Delta Delta member Lydia Cates does not favor the change, and she agreed that the current arrangement allows freshmen to meet people before they join their sorority.

"I feel like we get stuck in our own little bubble sometimes, and once you find friends, you're kind of just settled already," she said. "It's good to get to make your own friends before (recruitment)."

According to Doctor, votes from the Panhellenic chapters will be finalized next week, but a final decision on the start of recruitment week is contingent upon university approval.

THE DAILY MISSISSIPPIAN EDITORIAL STAFF

DANIEL PAYNE
editor-in-chief
dmeditor@gmail.com

ELIZA NOE
managing editor
dmmanaging@gmail.com

ERIN KILLION
copy chief
thedmcopy@gmail.com

GRIFFIN NEAL
news editor
thedmnews@gmail.com

JOSHUA CLAYTON
sports editor
thedmsports@gmail.com

CAROLINE NIHILL
arts & culture editor
thedmfeatures@gmail.com

BILLY SCHUERMAN
photography editor
thedmphotos@gmail.com

WESLEY CRAFT
opinion editor
thedmopinion@gmail.com

KATHERINE BUTLER
visuals editor
thedmphotos@gmail.com

MACKENZIE LINNEEN
MEAGAN TAPE
KATE KIMBERLIN
design editors
thedmdesign@gmail.com

KERRIGAN HERRET
multimedia editor
dailymissmedia@gmail.com

ARIANNA SWENSEN
online editor
thedmonlineeditor@gmail.com

ENJOLI HENDERSON
social media editor
dmsocialmedia@gmail.com

MADDY QUON
assistant news editor
thedmnews@gmail.com

When it is decided that The Daily Mississippian will take an editorial stance on an issue, the following positions will make decisions as the Editorial Board: editor-in-chief, managing editor, copy chief, sports editor and opinion editor.

28272

BETTER TV FOR LESS!

Americas Top 120

190 CHANNELS!

Only \$59.99/mo. for 12 months

Plus Hundreds More!

It's All Included at a Price Guaranteed for 2 Years!

All offers require credit qualification, 24-month commitment with early termination fee and eAutoPay. Prices include Hopper Duo for qualifying customers. Hopper, Hopper w/Sling or Hopper 3 \$5/mo. more. Upfront fees may apply based on credit qualification.

\$59.99

MONTH
for 12 months

190 Channels America's Top 120

\$19.99

/mo.

Subject to availability. Restrictions apply. Internet not provided by DISH and will be billed separately.

CALL TODAY - For \$100 Gift Card

Offer ends 1/13/20.

1-877-628-3143

Se Habla Español Call 7 days a week 8am - 11pm EST

Savings with 2 year price guarantee with AT120 starting at \$59.99 compared to everyday price. All offers require credit qualification, 2 year commitment with early termination fee and eAutoPay. Prices include Hopper Duo for qualifying customers. Hopper, Hopper w/ Sling or Hopper 3 \$5/mo. more. Upfront fees may apply based on credit qualification. Fees apply for additional TV's: Hopper \$15/mo., Joey \$5/mo., Super Joey \$10/mo.

S. GALE DENLEY STUDENT MEDIA CENTER

PATRICIA THOMPSON
Assistant Dean/Student Media

GREG BROCK
Daily Mississippian
Editorial Adviser

REBECCA BROWN
Advertising Sales
Manager
dmads@olemiss.edu

SALES ACCOUNT EXECUTIVES
Lindsay Carter
Isaiah Pugh
Michael Rackers
Morgan Stone

FOLLOW US



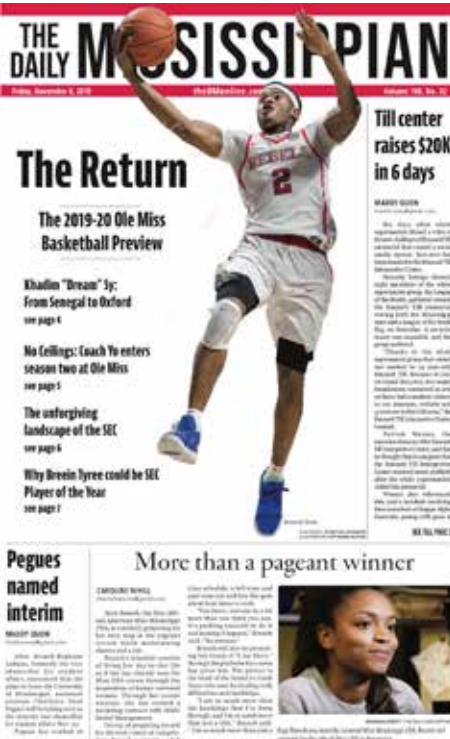
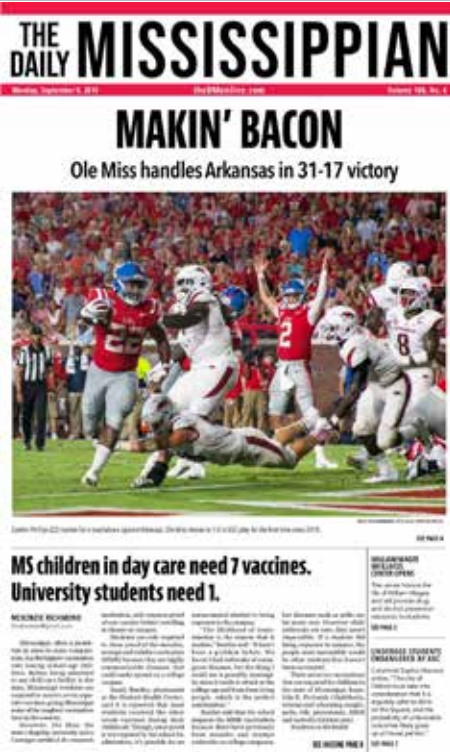
THE DM INSTAGRAM
@thedailymississippian

THE DM NEWS TWITTER
@thedm_news

THE DM SPORTS TWITTER
@thedm_sports

THE DM A&C TWITTER
@thedm_AandC

THE DM DESIGN TWITTER
@thedm_visuals

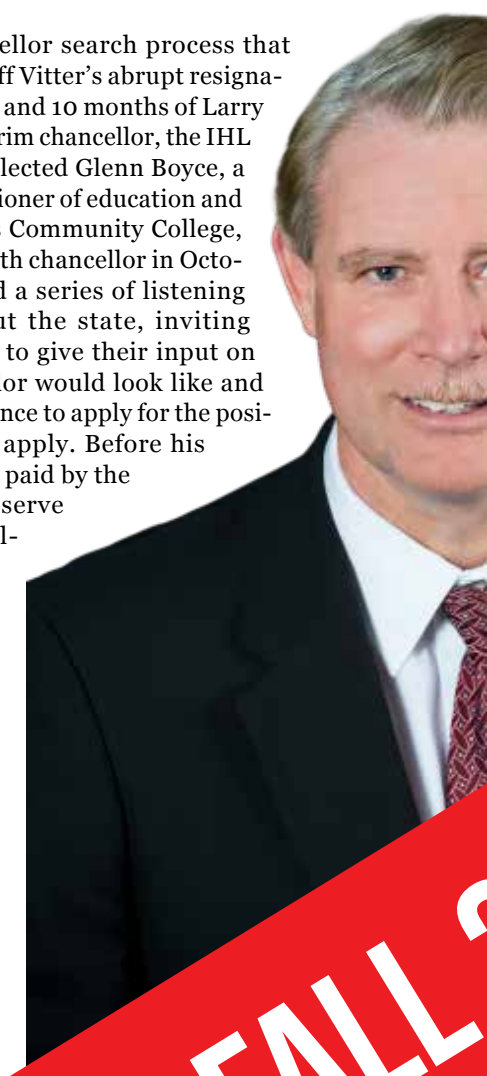


It's been a long semester

In just four months, the university has experienced major changes, including the controversial selection of a new chancellor, a tumultuous football season capped with the firing of the head coach, a historic personality election, beer and party decks for football fans, a continued process of the potential relocation of the Confederate monument, numerous changes in top campus leadership, Donald Trump Jr. visiting Oxford and votes of no confidence in the Institutions of Higher Learning. Here's a roundup of some of the events from the semester that has had a historic impact on the university.

Glenn Boyce selected as 18th

It was the chancellor search process that wasn't. Following Jeff Vitter's abrupt resignation in January 2019 and 10 months of Larry Sparks tenure as interim chancellor, the IHL Board of Trustees selected Glenn Boyce, a former IHL commissioner of education and president of Holmes Community College, as the university's 18th chancellor in October. The IHL hosted a series of listening sessions throughout the state, inviting citizens and alumni to give their input on what a new chancellor would look like and offered citizens a chance to apply for the position. Boyce did not apply. Before his selection, Boyce was paid by the UM Foundation to serve as a search consultant in the process, a process that would ultimately select him as chancellor.



Confederate monument on the move?

In late August, nearly five months after the ASB Senate and other campus groups voted to relocate the Confederate monument from the Circle to the Confederate cemetery, the university announced that it sent relocation plans to the Mississippi Department of Archives and History. If the MDAH approves the university's plans, then the Institutions of Higher Learning Board of Trustees will make the final decision on whether or not the monument is relocated.



FALL



A historic ASB election

This fall's personality elections introduced a series of firsts, but also controversy. After setting a record for voter turnout, all four personality elections — homecoming king, homecoming queen, Mr. Ole Miss and Miss Ole Miss — carried on to runoff elections. After the runoff, Carl Tart was named as the university's first homecoming king and Stefano Subauste was named the university's first non-Greek Mr. Ole Miss since the name changed from Col. Reb in 2012. In the run-off for Miss Ole Miss, Taran Carrasco received the highest percentage of votes, but was disqualified because the ASB Judicial Council ruled that her campaign violated the ASB constitution's rules concerning bribery. Cecilia Trotter was ultimately named Miss Ole Miss.

h chancellor

2019



Luke fired

After an embarrassing 21-20 loss in the Egg Bowl, new athletics director Keith Carter elected to fire head football coach Matt Luke. Luke was promoted to interim head coach in 2017 when Hugh Freeze was forced to resign and had the interim tag removed after an Egg Bowl win in Starkville. Luke led the Rebels to a 15-21 record in his three years. The move was met with overwhelming approval from fans, but the players were not happy to learn their coach was out from Twitter and group messages. A large group of players abruptly walked out of a team meeting in which Carter explained the decision. Some even suggested leaving the program.



THE DAILY MISSISSIPPIAN
 Monday, October 6, 2019 | TheMississippian.com | Volume 108, No. 10

IHL picks its chancellor

Search process cut short; insider Glenn Boyce selected

Bullbit.
 The search process for the new chancellor of the Intercollegiate Hockey League (IHL) was cut short after the league's board of directors selected Glenn Boyce as the new leader. Boyce, who has served as the league's executive director since 2017, was chosen by a vote of 10-0. The search process had been ongoing for several months, but the board decided to move forward with Boyce's selection. Boyce will take over the role from the current chancellor, who is stepping down. The new chancellor will be responsible for overseeing the league's operations and representing the league in various capacities. Boyce's selection was announced on Monday, October 6, 2019.

Coming Home

Meet the king and queen and Mr. and Miss Ole Miss

Homecoming week is coming to an end as Saturday's game approaches. After a week of trying to make it through the week, the Homecoming Court will formally be crowned as they walk onto the football field at halftime. Carlie Taylor and Delaney Salazar will be crowned as Miss and Mr. Ole Miss respectively while Corey Frings will be crowned Homecoming Queen and Callan will be crowned Ole Miss. Visit our Facebook page for more coverage.

STUDENT HOUSING GUIDE INSIDE

THE DAILY MISSISSIPPIAN
 Monday, October 7, 2019 | TheMississippian.com | Volume 108, No. 10

Boyce worked at 'segregation academies'

Anti-IHL protesters plan next steps

Will Boyce affect the university's accreditation?

What UM can learn from USC

Why IHL expedited their search process

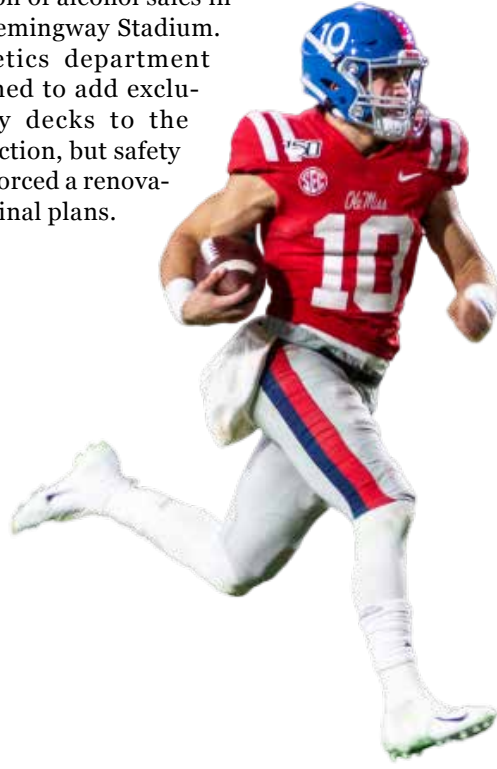
Boyce in, protesters out

BOYCE HIRE
 The university's search for a new chancellor was expedited after the Intercollegiate Hockey League (IHL) selected Glenn Boyce as its new leader. Boyce, who has served as the league's executive director since 2017, was chosen by a vote of 10-0. The search process had been ongoing for several months, but the board decided to move forward with Boyce's selection. Boyce will take over the role from the current chancellor, who is stepping down. The new chancellor will be responsible for overseeing the league's operations and representing the league in various capacities. Boyce's selection was announced on Monday, October 6, 2019.



Beer, party decks and record-low football attendance

With ticket sales steadily plummeting, Interim Athletics Director Keith Carter had to make some changes to the fan experience at Ole Miss sporting events. Earlier in the summer, the SEC lifted its ban on alcohol sales in sporting events and with several schools like Texas A&M and Arkansas quickly adding beer to the stadium concessions, Ole Miss was still delaying its decision. On Aug. 30, Ole Miss Athletics finally announced the addition of alcohol sales in Vaught-Hemingway Stadium. The athletics department also planned to add exclusive party decks to the student section, but safety concerns forced a renovation to the original plans.



Campus reacts to Boyce

Following the news that the IHL selected Glenn Boyce as chancellor, dissent across campus was rampant. The morning after the selection was leaked, protesters filled the ballroom at The Inn at Ole Miss — the site of the press conference announcing the Boyce hire — and caused the IHL to make the announcement via email. Days later, the Faculty Senate passed a vote of no confidence in the IHL and the chancellor search process, the graduate student council passed a vote of no confidence in Boyce and the ASB Senate voted to condemn the IHL's search process.



Plumlee at the piano

Watch the exclusive interview with the Duke basketball star at theonline.com.

THE DAILY MISSISSIPPIAN
 Monday, October 14, 2019 | TheMississippian.com | Volume 108, No. 10

Faculty Senate votes no confidence in IHL, chancellor selection process

Final resolution does not ask for Boyce's resignation

BOYCE HIRE
 The university's search for a new chancellor was expedited after the Intercollegiate Hockey League (IHL) selected Glenn Boyce as its new leader. Boyce, who has served as the league's executive director since 2017, was chosen by a vote of 10-0. The search process had been ongoing for several months, but the board decided to move forward with Boyce's selection. Boyce will take over the role from the current chancellor, who is stepping down. The new chancellor will be responsible for overseeing the league's operations and representing the league in various capacities. Boyce's selection was announced on Monday, October 6, 2019.

BOYCE RECORDED THE WAY?
 Glenn Boyce's selection as the new chancellor of the Intercollegiate Hockey League (IHL) has been met with controversy. Some critics argue that the search process was rushed and that Boyce's selection was influenced by the IHL. However, others believe that Boyce is the best candidate for the job. The university's board of trustees will be responsible for finalizing the selection.

PROTESTERS WALK OUT
 A group of protesters gathered in front of the Inn at Ole Miss to protest the selection of Glenn Boyce as the new chancellor. The protesters held signs and chanted slogans, expressing their dissatisfaction with the search process. The Inn at Ole Miss is the site of the press conference where Boyce's selection was announced. The protesters were eventually dispersed by police officers.

THE DAILY MISSISSIPPIAN
 Monday, September 23, 2019 | TheMississippian.com | Volume 108, No. 10

DISQUALIFIED

Carrasco received 52.3% of the vote. Flowers cost her the win.

ASB Senate passed it unanimously. Students said no.

The Associated Students of the University of Mississippi (ASU) Senate has passed a resolution condemning the search process for the new chancellor of the Intercollegiate Hockey League (IHL). The resolution was passed unanimously by the ASU Senate on Monday, October 14, 2019. The resolution states that the search process was rushed and that the selection of Glenn Boyce as the new chancellor was influenced by the IHL. The resolution also calls for the university to conduct a more thorough search process. The resolution was met with mixed reactions from students. Some students supported the resolution, while others believed that Boyce was the best candidate for the job. The university's board of trustees will be responsible for finalizing the selection.

MEN'S BASKETBALL

What's wrong with the Ole Miss offense?

JAKE DAVIS
thedmsports@gmail.com

The Ole Miss men's basketball team will try to defend Craddock Court once again on Saturday against Cal State Bakersfield.

The Rebels face a softer portion of their schedule after back-to-back losses to Oklahoma State and No. 24 Butler. Their next four opponents are below .500, presenting a chance to get back into a rhythm and build momentum before conference play in the new year.

No. 8 Gonzaga dismantled the 4-6 Roadrunners by in their only matchup against a ranked team so far, and have yet to play a Power-5 opponent.

After Saturday's game, the Rebels will face Middle Tennessee State at home before a matchup with Southeastern Louisiana in the Mississippi Coliseum in Jackson. Then they will return home for a

matchup against Tennessee Tech.

The upcoming games give the Rebels time to sort out their offensive woes. They have been abysmal in their half court offense, where the offense grinds to a standstill with sloppy turnovers and ill-fated heaves at the basket.

Ole Miss ranks 11th in the SEC in points per game and 13th in field goal percentage—underwhelming figures for a team with aspirations of making the Big Dance again. They are No. 233 in the country in points per possession at 0.93, tucked between two-win Cal Poly and three-win La Salle. The only SEC team behind the Rebels in this metric is Texas A&M, sitting at No. 329.

The Rebels are also 10th in the SEC in offensive rebounding, and while they are in the top 75 in the country in assists, they are among the worst when it comes to committing turnovers, putting



FILE PHOTO: BILLY SCHUERMAN/ THE DAILY MISSISSIPPIAN

Ole Miss will play Cal State Bakersfield in Oxford on Saturday.

them at No. 139 in assist to turnover ratio. Their poor scoring is even more compounded by the fact that they are No. 78 in the country in extra scoring chances per game.

The answer to the riddle of Ole Miss' offensive struggles lies with its star backcourt.

Last season, Breein Tyree and Devontae Shuler were outstanding shot creators who facilitated the offense and provided a strong scoring punch. This year both players have seen their averages drop significantly.

Tyree is down from 18 points

per game last year to 16 this year, but it is his efficiency that has taken more of a downward turn. Last year he shot nearly 46% from the field and over 37% from 3-point range, outstanding numbers that earned him First Team All-SEC honors.

This year his averages have plummeted to 39% on field goals and 26% from three. Even his free throw percentage is down nearly five points.

Shuler is in a similar situation. Last year he averaged 10.3 points on .458/.402/.823 splits but is down to nine points per game on

.366/.357/.611 shooting. He has also nearly doubled his turnovers per game from 1.79 per game last year to 2.5 this season.

Some of these issues should be ironed out as Blake Hinson continues to develop and work his way back into the offense. While he has played in four games this season, his points, field goal percentage and 3-point percentage are all up from last year.

The expansion of KJ Buffen's offensive game may hold the key to the Rebels' success. Buffen averaged just six points per game off the bench last season but is up to 11 per contest this year in a starting role.

He has been efficient from the field as well, shooting nearly 54% and 50% from beyond the arc, albeit on just six attempts. He also increased his rebounding to seven boards per game from 4.4 last year.

Buffen must become more comfortable with his jumper to provide better spacing on offense and give the guards more lanes to drive to the rim and create chances. He has already shown his ability to knock down the 15-18 foot midrange shot but must now do it more consistently to help overcome the team's offensive struggles.

Ole Miss takes on CSU Bakersfield at 1 p.m. on Saturday in The Pavilion.

CROSSWORD PUZZLE BROUGHT TO YOU BY DOMINO'S

NOW HIRING DRIVERS
at BOTH Oxford locations!
Make \$12-\$18 an hour!
Apply @ jobs.dominos.com OR in person!
Domino's East 1920 University 662.236.3844
Domino's West (Campus Store) 1603W. Jackson Ave 662.236.3030

- ACROSS**
- 1- Polite address;
 - 5- Poseidon's domain;
 - 8- Knocks lightly;
 - 12- First name in folk music;
 - 13- Mild cigar;
 - 15- Suit to ___;
 - 16- Fly like an eagle;
 - 17- Paddled;
 - 18- Prophetic sign;
 - 19- Pocketknife;
 - 22- Vintage;
 - 23- Chicken ___ king;
 - 24- Bits of work;
 - 26- Pulsates;
 - 29- Soldiers;
 - 31- Miracle ___;
 - 32- Race official;
 - 34- Indian form of address;
 - 36- Feathered creature;
 - 38- Spud;
 - 40- Stand up to;
 - 41- Word with truth or blood;
 - 43- Embankment;
 - 45- Hwy.;
 - 46- Remember;
 - 48- Likenesses;
 - 50- Roman emperor;
 - 51- Botanist Gray;
 - 52- Ate;
- DOWN**
- 1- Aggregate;
 - 2- Lined up;
 - 3- Jai ___;
 - 4- Short cannon;
 - 5- Thick slice;
 - 6- British nobleman;
 - 7- Territory;
 - 8- Confucian path;
 - 9- Air;
 - 10- Rind;
 - 11- Transport, mail;
 - 13- Live together;
 - 14- Comparatively peculiar;
 - 20- Coagulate;
 - 21- Aphrodite's son;
 - 25- Incite;
 - 26- Judge, e.g.;
 - 27- Appalling;
 - 28- Petty;

SOLUTION TO 12.4.2019 PUZZLE



- 29- Rome's Fontana di ___;
- 30- Uses a sieve;
- 31- "Pygmalion" monogram;
- 33- Summer along the Seine;
- 35- Tournament exemption;
- 37- Il ___ (Mussolini);
- 39- Sends back into custody;
- 42- Latin singer Anthony;
- 44- Orient;
- 47- Like some change;
- 49- Device for holding up a stocking;
- 52- Party-thrower;
- 53- Poker stake;
- 55- Orange Bowl org.;
- 56- Bay;
- 57- Util. bill;
- 58- Dynamic start?;
- 59- Mai ___;
- 60- Work with acid;
- 62- Hosp. staffers;

Crossword puzzle provided by BestCrosswords.com (www.bestcrosswords.com). Used with permission.

CLASSIFIEDS INFORMATION

The DEADLINE to place, correct or cancel an ad is 12 p.m. one business day in advance. The Daily Mississippian is published Monday through Friday.

Classified ads must be prepaid. All major credit cards accepted. No refunds on classified ads once published.

The DM reserves the right to refuse ads that appear to offer unrealistic or questionable products or services.

To place your ad in The Daily Mississippian Classifieds section, visit: <http://www.thedmonline.com/classifieds>.

RENTALS	SERVICES
<p>CONDO FOR RENT TWO BEDROOM / TWO BATH at The Mark. Includes major appliances, water, internet, and cable TV. \$950/ month. Available Now (662)456-6226</p>	<p>Miscellaneous DESIGN GALLERY 1603 University Ave. Oxford Alterations, Custom Curtains, Blinds, Shades, Bedding, Cushions, Dorm Decoration. Designer Julie Coleman www.designgalleryoxford.com (662)655-0500</p>

SUDOKU®

Puzzles by KrazyDad

7				3					
	9	8		5		6	7		
4		6			9		1		
			6	9	4				
		9	1	4					
9	7				2		5		
3	5	7			1	4			
			3					9	

HOW TO PLAY

Complete the grid so that every row, column and 3x3 box contains the numbers 1 through 9 with no repeats.

DIFFICULTY LEVEL

INTERMEDIATE

9	7	9	2	5	3	1	4	8
8	4	1	6	9	7	2	5	3
5	3	2	4	8	7	9	6	9
3	8	5	4	2	1	9	7	6
9	6	7	8	3	5	4	2	1
2	1	2	9	6	7	3	8	5
4	5	6	7	8	2	6	3	4
7	6	3	5	4	1	8	9	2
4	2	8	3	6	9	5	1	7

OPINION

We still have work to do

ARIELLE HUDSON

thedmopinion@gmail.com

It still hasn't hit me.

Ten years ago, if someone would have told me I would be the University of Mississippi's 27th Rhodes Scholar or its first black female Rhodes Scholar, I would have told them that they had a better chance of winning the jackpot at the casino, one of Tunica's illusionary beacons of hope.

However, what has hit me is the overwhelming amount of love I've received from my UM family. From hundreds of messages and social media comments to congratulatory calls from distinguished alumni and the chancellor, I've never felt as supported or more a part of the UM community.

The opportunity to study

at the University of Oxford, England as a Rhodes Scholar is a great accomplishment; however, December brings a much bigger opportunity for our beloved university and our great state. It brings an opportunity for all students and faculty, especially African Americans, to feel more welcomed and supported as important members of the UM family and as citizens of Mississippi.

Nine months ago, five students and I sat in a small board room in the Croft Institute for International Studies and co-wrote a student body resolution to recommend that the Confederate monument be relocated from the Circle, the heart of our campus, to the Confederate cemetery on campus. This resolution, which garnered support from many university constituent groups with varying

ideologies, passed unanimously in the Associated Student Body Senate on March 5. The resolution and the student-led movements that accompanied it broke national news and ignited the process for the statue's relocation.

On Aug. 27, the university submitted plans to the Mississippi Department of Archives and History (MDAH) to relocate and reinstall the Confederate monument. These plans were initially scheduled to be reviewed and voted on at MDAH's October meeting. However, in a statement from the Provost, the University community was informed that "with the complexity of the move, both the development and the review of the specs have taken longer than anticipated" and that MDAH is "on track" for voting on the plans at their December

meeting.

At 10 a.m. on Friday at the Winters Building in Jackson, the Board of Trustees of the Department of Archives and History will finally meet to vote on UM's relocation plans for the Confederate monument.

To best support me, students like me and the future of UM, I am urging all members of the UM community — students, staff, faculty and alumni — to either attend this public meeting on Dec. 6 or call MDAH at 601-576-6850 and demand that the board approves the university's plans to relocate the monument to the Confederate cemetery.

The University of Mississippi is my home. Here, I have grown into the Rhodes Scholar I am today. I have a love for this place and the people in it. When you love

something, you have to balance accepting it for what it is while also challenging it to become the best that it can be. The University of Mississippi has a rich history, and it has not always been on the right side of it.

However, if we begin the work toward true racial reconciliation, it has the potential to live up to the namesake that it carries as Mississippi's flagship institution and to set an example for the rest of the world. This work begins with the relocation of the Confederate statue, and it takes all of us to see it through.

Arielle Hudson is a senior English Education major from Tunica, Mississippi.

Campus culture and '1984' aren't so different

LAUREN MOSES

thedmopinion@gmail.com

I recently went to see the play "1984" put on by the Aquila Theatre company of New York. It is a fantastic and moving play depicting a dystopian society where "Big Brother" is always watching, and I couldn't help but think, "This all seems so familiar."

The book that many of us read in high school never seemed so real until I saw it acted out on stage. From the play, I noticed some startling similarities between Orwell's chilling world and today's American society.

One of the most threatening similarities between "1984" and our current culture is the notion that thought is a crime. While we may not have Thought Police lurking in the streets and watching our every move through a telescreen, we do have universities passing hate speech codes. These codes are created to limit hate speech on campus — speech that some say hinders academic freedom because

women and minority groups are subject to distracting slander.

Colleges and universities that create speech codes not only limit speech in the public sphere, but they also cause students to self-censor. Rather than bringing sensitive subjects to light for debate, some students bite their tongue, flying under the radar until they can voice their opinions elsewhere.

The Foundation for Individual Rights in Education, a group focused on maintaining First Amendment liberties on college campuses, published a 2018 list of the worst colleges for free speech. Among the top 10 were DePaul University in Chicago, Texas State University in San Marcos, Texas, and University of California in Berkeley. Citing violations of free speech rights by administrators, its list included students censored for political speech on the right and left. Although Ole Miss did not make the cut, we are not innocent.

The culture on our campus parallels the dystopian society

in "1984." While many find the movement of the Confederate monument from the Circle a moot point, its removal shows that we are not respecting the lessons learned from history.

The Civil War points to how deep divisions can lead to the destruction of our great nation, but it also shows how far our country has come in valuing the lives of all people. The monument in the Circle reminds us of these hard truths and propels us forward in creating unity and friendship.

Like Big Brother in "1984," we are whitewashing history, removing the parts that we don't like for the benefit of those in power. When the tides of war shifted in Orwell's story, Big Brother had people rewrite history to reflect what was happening in the present. It seemed that what happened in the present had always occur and will persist throughout time, even if something had changed.

The same is happening today, though on a much smaller scale.

The main character of "1984," Winston Smith, says it best: "who controls the past controls the future." There may be legitimate arguments on both sides of the debate regarding the monument, but in any case, we cannot learn history if we rewrite it.

Luckily, our times are not as bad at least not yet, but how long until "1984" becomes a reality? How long until we lose the principles that this country was founded upon in the name of "social liberation"? The culture of today has become Godless and is destroying everything that does not conform

to its beliefs.

Beware of the dangers of Big Brother, also known as big government. It is our duty to restore ideas such as free speech, limited government and free enterprise. The solutions to our problems do not lie with a few elites put in charge of society, but in our actions as individuals to help our fellow man. Protect the rights of your neighbor and our society will be spared from the fate "1984" threatens.

Lauren Moses is a junior economics and political science major from Coppell, Texas

Opinion Policies:

Columns do not represent the views of The University of Mississippi or The Daily Mississippian. The Daily Mississippian welcomes letters to the editor, which should be emailed to dmlatters@olemiss.edu. Letters should be no longer than 300 words. They may be edited for clarity, brevity and libel. Third-party letters and those with pseudonyms or no name will not be published. Letters are limited to one per individual per month. Letters should include contact information, including relationship to the university, if applicable.

LAKEFRONT LUXURY
LIVING AT AN
AFFORDABLE PRICE




**WELLINGTON
PLACE**

**Come by for a tour before Christmas break
and choose between a free Starbucks or
South Depot Gift Card just for stopping by!**

Schedule a tour anytime at
calendly.com/wellington-place-oxford

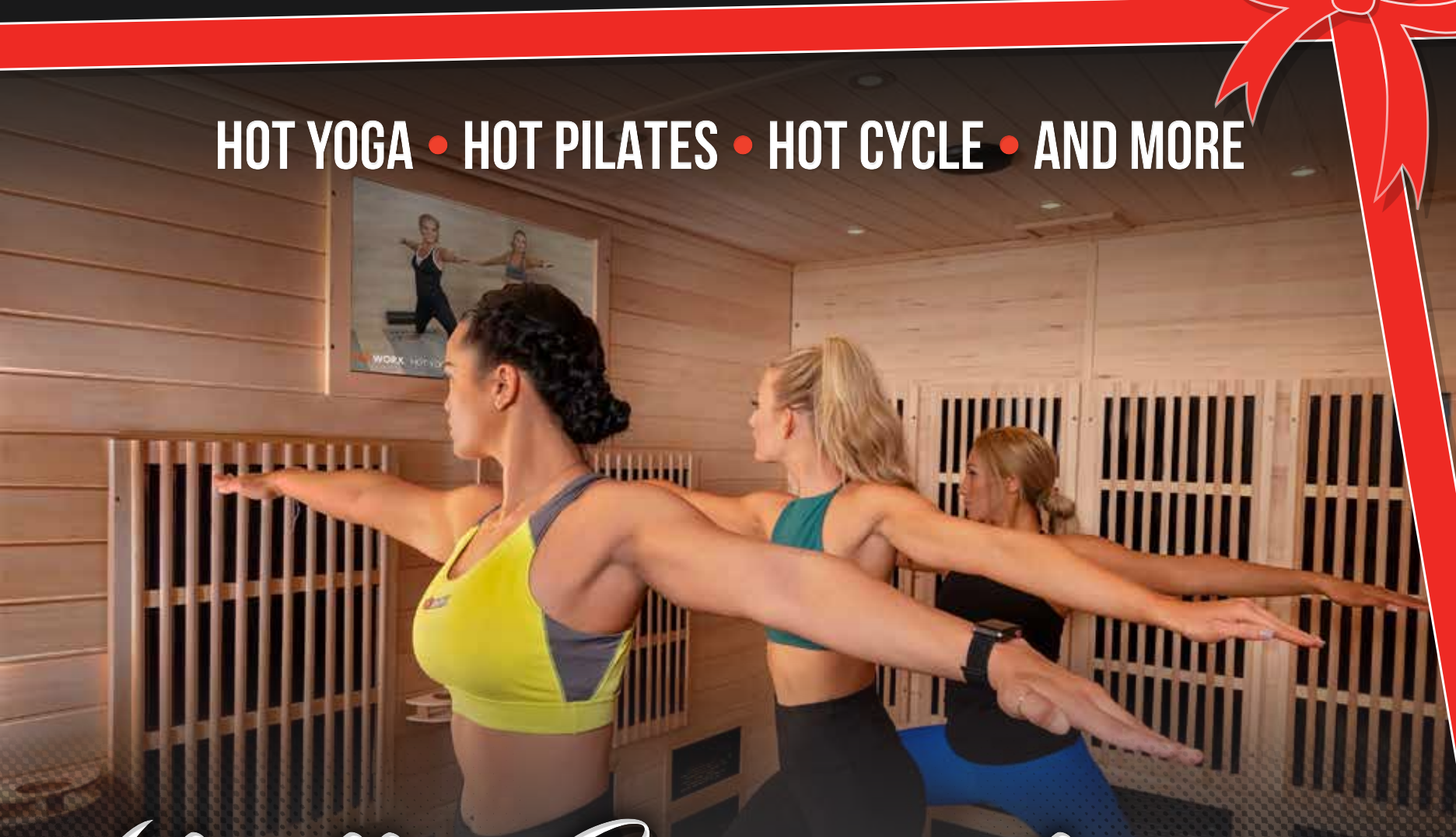
**Call us at
(662) 832-4222 today!**

**IMMEDIATE MOVE-INS AVAILABLE.
MAJOR DISCOUNTS FOR IMMEDIATE
AND JANUARY MOVE-INS.**

HOTWORX®

24 HOUR INFRARED FITNESS STUDIO

HOT YOGA • HOT PILATES • HOT CYCLE • AND MORE



'Tis the Season to TORCH THE CALORIES

FEAST WITH NO REGRETS THIS HOLIDAY SEASON!

MORE WORKOUT, LESS TIME WITH

3D TRAINING

1 HEAT 2 INFRARED ENERGY 3 EXERCISE



PRESENT THIS COUPON FOR

ONE FREE WORKOUT

A \$20 VALUE

*VALID FOR FIRST TIME GUESTS ONLY. MUST BE REDEEMED DURING STAFFED HOURS.