

University of Mississippi

eGrove

---

Sheet Music, 1920-1929

Sheldon Harris Collection

---

1925

## The Melody That Made You Mine / music by W.C. Polla; words by Cliff Friend

W. C. Polla

Cliff Friend

Shapiro Bernstein and Co. (New York)

Follow this and additional works at: [https://egrove.olemiss.edu/sharris\\_d](https://egrove.olemiss.edu/sharris_d)



Part of the [African American Studies Commons](#), and the [Music Commons](#)

---

### Recommended Citation

Polla, W. C.; Friend, Cliff; and Shapiro Bernstein and Co. (New York), "The Melody That Made You Mine / music by W.C. Polla; words by Cliff Friend" (1925). *Sheet Music, 1920-1929*. 69.

[https://egrove.olemiss.edu/sharris\\_d/69](https://egrove.olemiss.edu/sharris_d/69)

This Book is brought to you for free and open access by the Sheldon Harris Collection at eGrove. It has been accepted for inclusion in Sheet Music, 1920-1929 by an authorized administrator of eGrove. For more information, please contact [egrove@olemiss.edu](mailto:egrove@olemiss.edu).

# THE MELODY THAT MADE YOU MINE

Words by **CLIFF FRIEND**

Music by **W. C. POLLA.**



*Hanna Luttman*  
With  
Ukulele  
Arrangement



Featured by  
**VINCENT LOPEZ**  
and his  
Pennsylvania Hotel Orch.

*Hanna*

3. / 16. / 25

MADE IN U.S.A.

*Shapiro*  
*Bernstein*  
*Co.* MUSIC PUBLISHERS  
47th STREET  
New York



# Try this on your Piano

"Music Box Revue"

## Polly Of Hollywood

By B. G. DE SYLVA  
and JAMES F. HANLEY

CHORUS

They call me Pol - ly The pest of Hol - ly - wood

*pf*

I did the best I could To be a star

Of course I can't vamp like Ni - ta Nal - di would

Copyright MCMXXV by Shapiro, Bernstein & Co. Inc., Cor. Broadway & 47th Street, New York  
Propiedad Asegurada Para La Republica Mexicana MCMXXV Todos Los Derechos Reservados  
Derechos De Reproduccion Reservador En Cuba y Sud y Central America

International Copyright Secured

ALL RIGHTS RESERVED  
Including Public Performance For Profit

Made in U. S. A.

Copies Can Be Had Wherever Music Is Sold  
Also On Records for Talking Machine and Player Piano

# The Melody That Made You Mine

Words by  
CLIFF FRIEND

Uke in B $\flat$   
With Piano  
Tune Thus  
F B $\flat$  D G

Music by  
W. C. POLLA

Valse lento

The piano introduction consists of two staves in 4/4 time, marked 'Valse lento'. The key signature has two flats (B-flat major or D-flat minor). The melody is played in the right hand, and the accompaniment is in the left hand. The piece begins with a soft dynamic (f) and features a gentle, flowing melody.

The main body of the song features a vocal line and piano accompaniment. The piano part includes guitar chord diagrams above the treble clef staff. The lyrics are as follows:

Lis - ten, dear, do you hear  
Mem - o - ries come to me

Mu - sic so di - vine, \_\_\_\_\_ Dont that strain  
Of that won - drous time, \_\_\_\_\_ My heart's thrilled

bring a - gain Mem - o - ries su - blime, \_\_\_\_\_  
and it's filled With ro - mance di - vine, \_\_\_\_\_

Arr. for the Uke. by Dick Konter.

Copyright MCMXXV by Shapiro, Bernstein & Co. Inc. Cor. Broadway & 47th Street New York.  
Propiedad Asegurada Para La Republica Mexicana MCMXXV Todos Los Derechos Reservados.  
Derechos De Reproduccion Reservados En Cuba y Sud y Central America.

ALL RIGHTS RESERVED.  
Including Public Performance For Profit.

International Copyright Secured.

Made in U. S. A.



It's that sweet old mel-o - dy, The one that made you mine:—  
 Play a - gain that sweet-re - frain, The one that made you mine:—

## Refrain

It was a moon - light, Beau-ti-ful June night, We waltzed this

sweet mel-o - dy, — I held you near me Called you "my dear -

ie" And you whis-pered that you loved me, — Mu-sic en-tran -

cing, Kept us a dan - cing, Seemed like a mes-sage di-

vine. That was sent from a - bove, For we fell in

love, That is the mel - o - dy that made you mine. It was a

mine - - - -

*p* *pp*



**TRY THESE OVER**

**YOUR MUSIC DEALER** CARRIES THESE SONG HITS -  
Every copy contains a **UKELELE** part

**AT THE END OF THE ROAD**

*A New Ballad by the Writers of "INDIANA"*



At the end of the road, The long dust - y road, There's peace, there's con - tent - ment and rest..

Copyright MCMXXIV by Shapiro, Bernstein & Co. Inc.

**THE ONLY ONLY ONE (for me)**

*The dance craze of the day.*

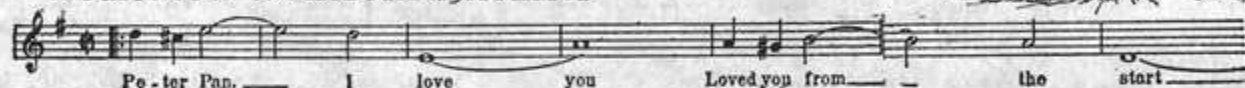


If you would be the on - ly on - ly one for me Then I would be the on - ly on - ly one for

Copyright MCMXXIV by Shapiro, Bernstein & Co. Inc.

**PETER PAN (I Love You)**

*Dedicated to Miss Marilyn Miller*

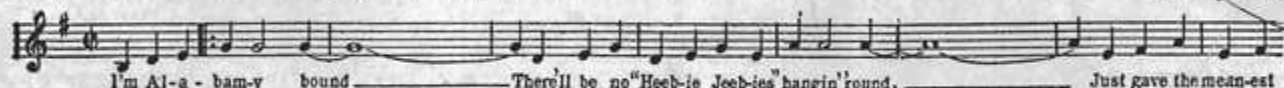


Po - ter Pan, I love you Loved you from the start

Copyright MCMXXIV by Shapiro, Bernstein & Co. Inc.

**ALABAMA BOUND**

*AL. JOLSON'S Big Hit.*

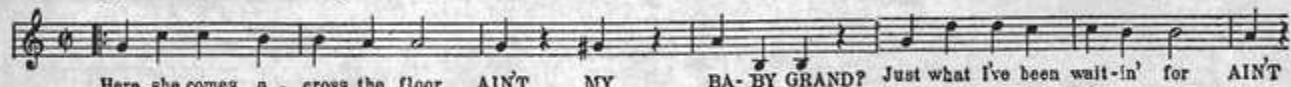


I'm Al - a - bam - y bound There'll be no "Heeb - ie Jeeb - ies" hangin' round, Just gave the mean - est

Copyright MCMXXV by Shapiro, Bernstein & Co. Inc.

**AIN'T MY BABY GRAND?**

*A Toe-tickling mirth provoker by the writers of "WHY DID I KISS THAT GIRL?"*

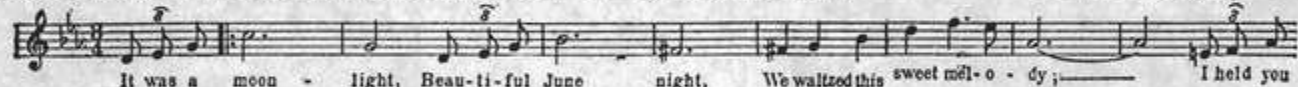


Here she comes a - cross the floor AIN'T MY BA - BY GRAND? Just what I've been wait - in' for AIN'T

Copyright MCMXXV by Shapiro, Bernstein & Co. Inc.

**THE MELODY THAT MADE YOU MINE**

*VINCENT LOPEZ' Waltz Hit in the "GREENWICH VILLAGE FOLLIES"*

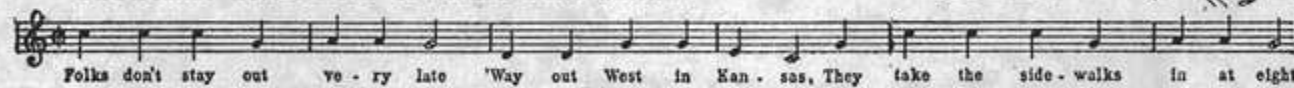


It was a moon - light, Beau - ti - ful June night, We waltzed this sweet mel - o - dy; I held you

Copyright MCMXXV by Shapiro, Bernstein & Co. Inc.

**'WAY OUT WEST IN KANSAS**

*The Radio hit - lots of extra choruses.*

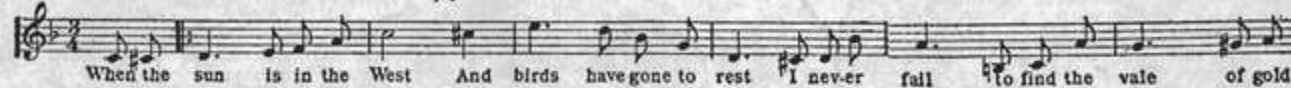


Folks don't stay out ve - ry late 'Way out West in Kan - sas, They take the side - walks in at eight

Copyright MCMXXIV by Shapiro, Bernstein & Co. Inc.

**THE VALE OF GOLDEN DREAMS**

*A Ballad with a real appeal*



When the sun is in the West And birds have gone to rest I never fail to find the vale of gold

Copyright MCMXXV by Shapiro, Bernstein & Co. Inc.

**THE GEM** America's Standard **Dance Folio**  
 for Piano Solo only **1925** Price 50¢ Postpaid

*The outstanding Waltz of the year* **Nightingale** *with whistling effect*