

University of Mississippi

eGrove

Postcards, 2-sided

Mississippi City and Counties Postcards

September 2019

Episcopal Chapel of the Cross, Mannsdale, Miss.

Deep South Specialties, Inc. (Jackson, Miss.)

Follow this and additional works at: https://egrove.olemiss.edu/ms_pcards



Part of the [Tourism and Travel Commons](#)

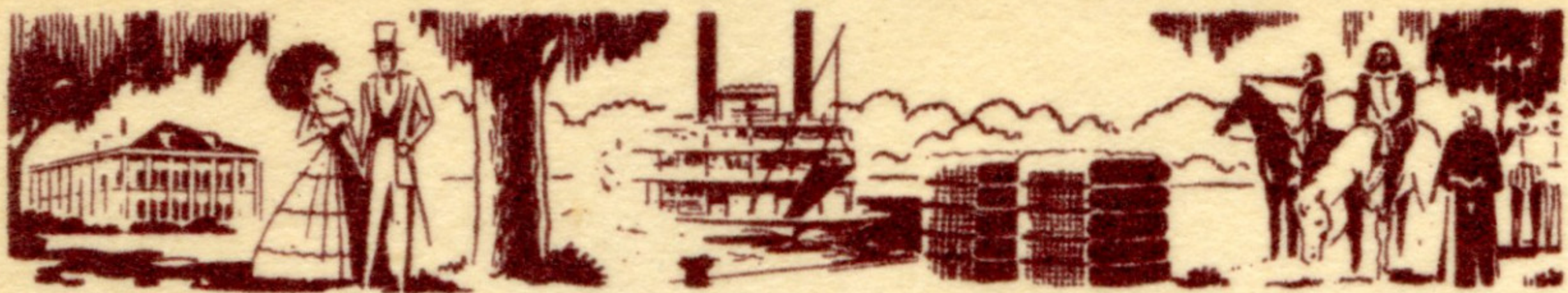
Recommended Citation

Deep South Specialties, Inc. (Jackson, Miss.), "Episcopal Chapel of the Cross, Mannsdale, Miss." (2019). *Postcards, 2-sided*. 118.

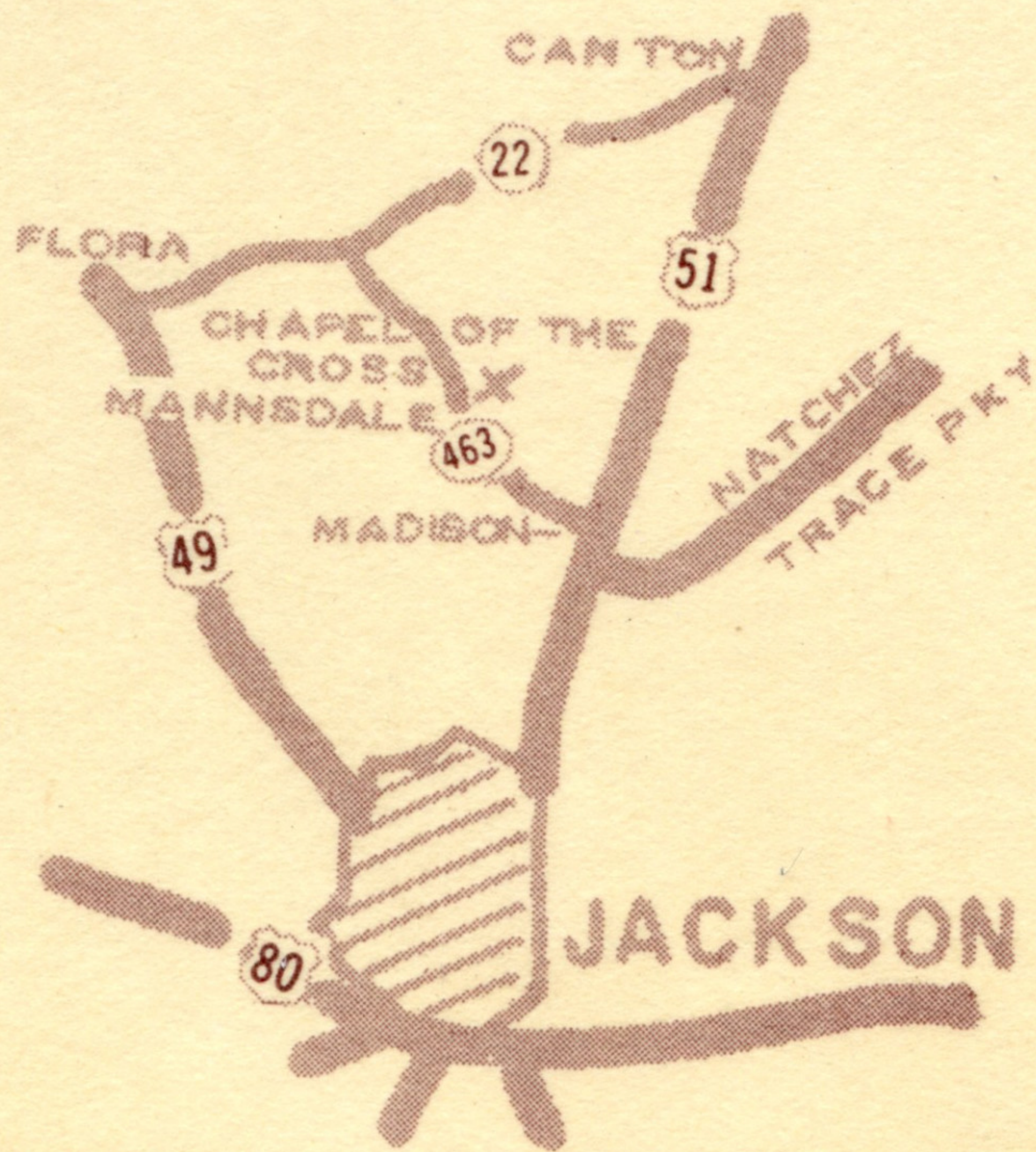
https://egrove.olemiss.edu/ms_pcards/118

This Book is brought to you for free and open access by the Mississippi City and Counties Postcards at eGrove. It has been accepted for inclusion in Postcards, 2-sided by an authorized administrator of eGrove. For more information, please contact egrove@olemiss.edu.





**EPISCOPAL CHAPEL OF THE CROSS,
MANNSDALE, MISSISSIPPI** . . . Consecrated in 1852, this Chapel, designed by the celebrated English architect Wills, is considered one of the two perfect pieces of Gothic architecture in the United States. Adopted as the Southeastern Regional Shrine of Children of the American Revolution. Located approximately seven miles west of Madison.



MIRRO-KROME © CARD BY H. S. CROCKER CO., INC., SAN FRANCISCO 1

PUB. BY DEEP SOUTH SPECIALTIES, INC., P. O. BOX 1802, JACKSON, MISS.

DS-313

COLOR PHOTO BY HUBERT A. LOWMAN