

University of Mississippi

eGrove

Touche Ross Publications

Deloitte Collection

1962

Introducing St. Louis

Henry E. Mendes

Edwin H. Wagner (Mrs.)

Follow this and additional works at: https://egrove.olemiss.edu/dl_tr



Part of the [Accounting Commons](#), and the [Taxation Commons](#)

Recommended Citation

Quarterly, Vol. 08, no. 2 (1962, June), p. 31-37

This Article is brought to you for free and open access by the Deloitte Collection at eGrove. It has been accepted for inclusion in Touche Ross Publications by an authorized administrator of eGrove. For more information, please contact egrove@olemiss.edu.



TOUCHE, ROSS, BAILEY & SMART

Formal beauty is expressed in the entrance to our office in St. Louis. The article on the following pages is another in a series describing some of our offices in the United States.



Janet Kreasky, left, and Lillian Meyer chat in reception room.

Introducing

ST. LOUIS

ST. LOUIS IS A CULTURAL CITY, steeped in tradition. It is a great educational center with two major universities and a dozen colleges. There is much inherited wealth in the community, which has not been an aid to financial and industrial growth. Many are worried as to what the future may hold, as little new industry has entered the city in the last quarter century.

The principal industries of St. Louis are somewhat difficult to name because of the continual shift of manufacturing to rural communities and the steady exodus of many plants seeking cheaper labor markets in the southern states. Once the most important industry, shoe manufacturing has dwindled to perhaps ten factories, although many home offices are still based here. Breweries are still prominent, as are a number of chemical plants. In recent years automobile assembly plants including Chrysler have become important and



Edwin H. Wagner, Jr., partner in charge of the St. Louis Office.

Early history by Henry E. Mendes

Photographs of office by Mrs. Edwin H. Wagner, Jr.

St. Louis now ranks second only to Detroit in this industry. Largest employer in the State of Missouri is the McDonnell Aircraft Co., with its huge plant in St. Louis County.

For many years the St. Louis Office has handled the work of a number of retailers in this area, most notably that of The May Department Stores Company, one of the principal retailers in the United States. Important clients also include those in the investment and financial fields, shoe retailers and manufacturers. The office also does a considerable amount of work for the Archdiocese of St. Louis and the related Catholic Charities, and we are auditors for Ozark Airlines, the only St. Louis based commercial airline.

The St. Louis Office has its full share of audit and tax work and now is placing emphasis on management services with Peter Owen, a recent transfer from Detroit, in charge. Our tax department handles



Howard P. Maloney, manager, at his desk.

many trusts, some estates and numerous individual and corporate returns.

The Touche, Niven Years

The St. Louis Office was established in 1915 by Touche, Niven principally to be near their important client, The May Department Stores Company, which has its administrative offices in St. Louis. The firm had been appointed auditors of The May Company when the retail organization was formed in 1910.

In July 1915 Henry Mendes (now an advisory partner) who had been appointed resident manager of the office and who had been on the New York Office staff since 1910 arrived with Herbert C. Freeman to open the St. Louis Office. Their first act was to call on David May and other May Company officials to lease office space in the Railway Exchange Building, the first six floors of which were occupied by the company's operating unit, the Famous-Barr store. Then the two men engaged a staff assistant, Victor H. Stempf, who had just graduated from St. Louis University. A brilliant man, many thought he would have become Managing Partner of Touche, Niven had it not been for his untimely death.

The new office found itself very busy almost immediately, being instructed by Touche, Niven's Chicago Office to make examinations



Omer C. Kleinschmidt photographed in his office.

of certain local units of the Chicago, Rock Island and Pacific Railway, including its interest in the Terminal Railway Association of St. Louis and the Crawford County (Kansas) Mining Company (a wholly-owned subsidiary). The first report ever issued by the office was addressed to the firm's Chicago Office and related to the accounts of The Crawford County Mining Company for the period of two years ended June 30, 1915.

While it could not be said that the business of the office increased spectacularly, a good, healthy growth was indicated. The necessary additions to the permanent accounting staff were recruited almost entirely from St. Louis University and the Pace & Pace School of Accountancy at the St. Louis YMCA. Among these were William C. Waggoner, now an advisory partner, who transferred to the Chicago Office of Touche, Niven; and J. Irl Beatty, who later became the comptroller and vice president of The Pillsbury Company, a client of our Minneapolis Office.

On deciding early in 1919 that it was desirable to have an office in Cleveland, the firm delegated Mr. Mendes to open the office in that city. Victor Stempf became manager in charge of St. Louis when Mr. Mendes moved to Cleveland and later to New York. Mr. Stempf became a partner in 1922.

The next year Edwin H. Wagner, Sr., who had been one of the

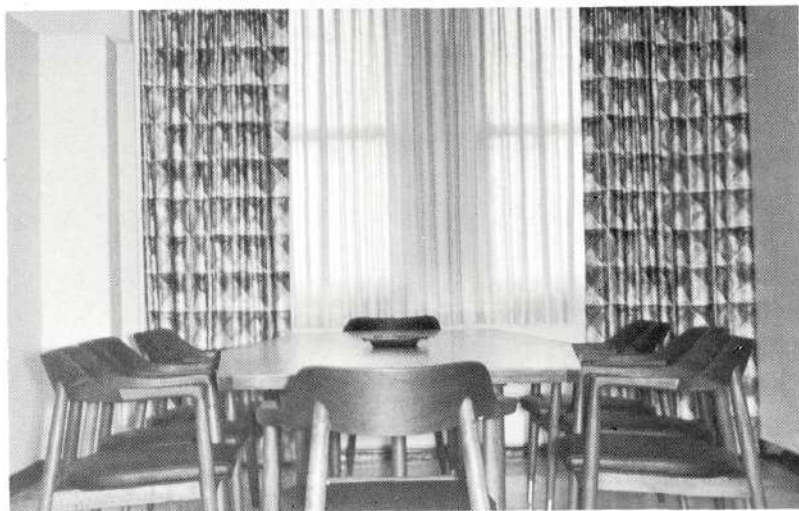


Brad Bradsher, left, and Andrew Ries of the Tax Department.

accounting instructors at St. Louis University when Victor Stempf was a student, was admitted to partnership and his practice, conducted under the name of Edwin H. Wagner & Co., was merged with that of the firm. At this time the office was moved to the Arcade Building. Since business had increased materially in New York, Victor Stempf moved there in 1927 and from that date the St. Louis Office was in sole charge of Edwin H. Wagner, Sr. until 1939 when Edwin H. Wagner, Jr. was admitted to partnership.

The younger Wagner resigned at the outbreak of World War II and accepted a commission as Lieutenant Commander in the U. S. Naval Reserve. To fill the void caused by Mr. Wagner's withdrawal from the firm, Henry C. Stephens transferred from New York to St. Louis and assumed the duties of office manager, becoming a partner the following year. When the war ended, Edwin H. Wagner, Jr. was readmitted to the firm following his honorable discharge from the service. He was cited by the Secretary of the Navy for outstanding performance as a member and executive officer of the New York Division, Navy Price Adjustment Board.

Thus when the firm of Touche, Niven, Bailey & Smart was organized, the old firm had three partners resident in St. Louis: Edwin H.



The conference room of the St. Louis Office.

Wagner; his son, Edwin H. Wagner, Jr.; and Henry C. Stephens.

More Recent History

When the new firm was organized, Edwin H. Wagner, Sr. retired to advisory partner status.

In 1959 James G. Carroll transferred to the St. Louis Office from the New York Office. Mr. Carroll had joined the New York Office staff in 1950 and was a supervisor at the time of his transfer. A graduate of Fordham University, Mr. Carroll became a partner in 1959.

Henry Clay Stephens retired in August, 1959.

On September 1, 1960 the firm of Muren & Company was merged with TRB&S and Messrs. Muren and Bruen were admitted to partnership. Lee J. Muren started his firm in 1924 and John F. Bruen, Jr. joined him in 1937. On the death of one of their partners in 1959, Mr. Muren decided to merge with a national firm. He called on us because he had known our people for many years and worked closely with the Wagners on many state CPA problems.

Two alumni of St. Louis are now partners in other offices of the firm: both David W. Muir of the Dallas Office and William S. Harter of the Detroit Office received their early experience with St. Louis.