

University of Mississippi

eGrove

Postcards, 2-sided

Mississippi City and Counties Postcards

September 2019

Airlie, Natchez, Miss.

E. C. Kropp Co. (Milwaukee, Wis.)

Follow this and additional works at: https://egrove.olemiss.edu/ms_pcards

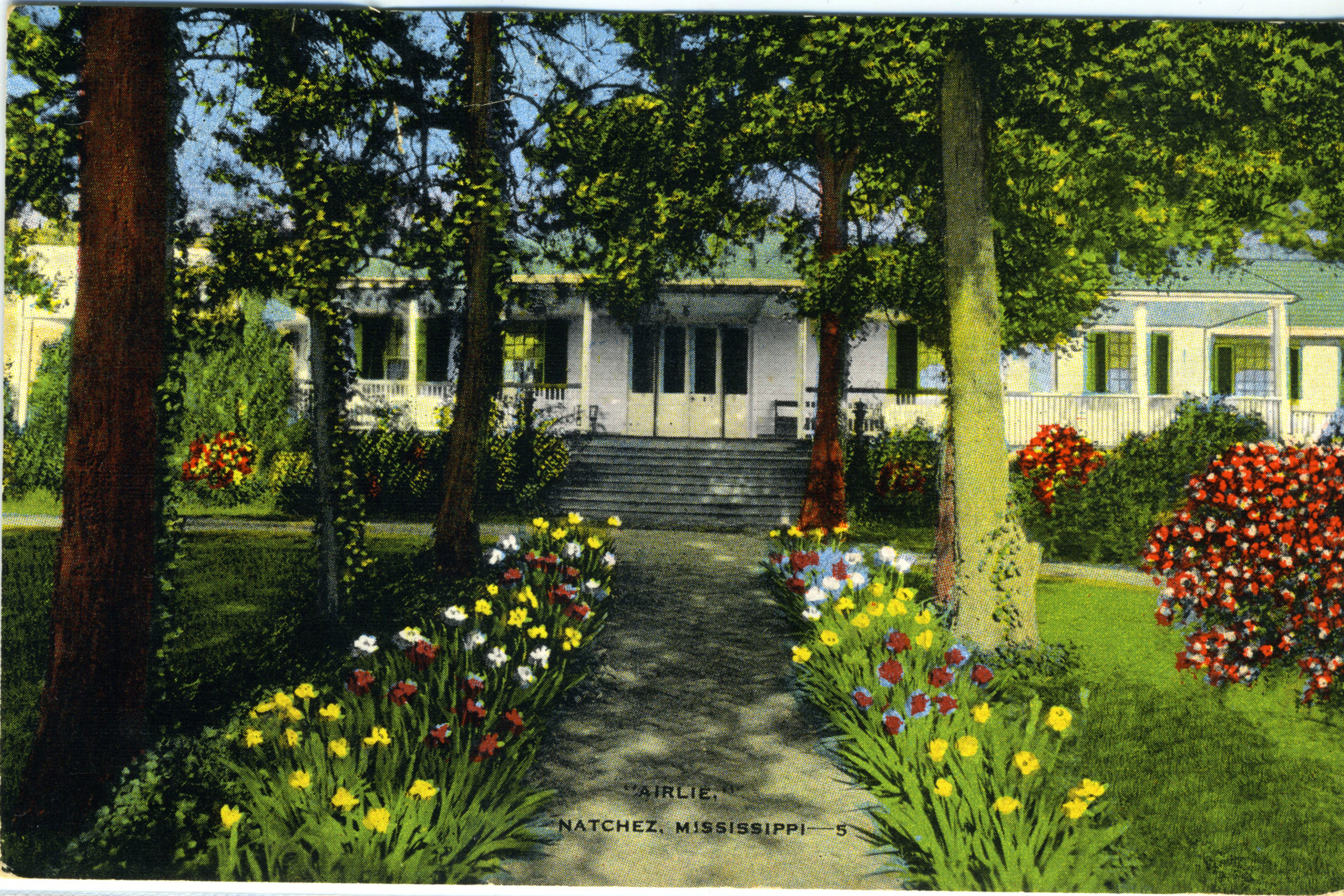


Part of the [Tourism and Travel Commons](#)

Recommended Citation

E. C. Kropp Co. (Milwaukee, Wis.), "Airlie, Natchez, Miss." (2019). *Postcards, 2-sided*. 202.
https://egrove.olemiss.edu/ms_pcards/202

This Book is brought to you for free and open access by the Mississippi City and Counties Postcards at eGrove. It has been accepted for inclusion in Postcards, 2-sided by an authorized administrator of eGrove. For more information, please contact egrove@olemiss.edu.



"AIRLIE."

NATCHEZ, MISSISSIPPI—5

Built prior to 1790 during time of the Spanish occupancy. Used as a Federal hospital during the War between the States. Rough-hewn beams mortised together, old fireplaces, many small-paned windows with handsome blinds are interesting features of its construction. Furnished throughout with exquisite heirloom pieces of mahogany and rosewood. Home of the Ayres P. Merrill family.

7998

Published by Magnolia News Agency, Natchez, Miss. —
Natural Color Post Card Made in U.S.A. by E. C. Kropp Co., Milwaukee, Wis. — ABL

POST CARD

