

University of Mississippi

eGrove

Touche Ross Publications

Deloitte Collection

1963

TRB&S in Chile

Anonymous

Follow this and additional works at: https://egrove.olemiss.edu/dl_tr



Part of the [Accounting Commons](#), and the [Taxation Commons](#)

Recommended Citation

Quarterly, Vol. 09, no. 3 (1963, September), p. 28-29

This Article is brought to you for free and open access by the Deloitte Collection at eGrove. It has been accepted for inclusion in Touche Ross Publications by an authorized administrator of eGrove. For more information, please contact egrove@olemiss.edu.

New York and Santiago Handle Joint Engagement at Portillo....

When Robert W. Purcell and Richard S. Aldrich (Chairman and Vice-President, respectively, of International Basic Economy Corporation), decided in 1960 to take over ownership and operation of Portillo, a ski resort in the Andes, they engaged our associates in Santiago, Chile to assist the local manager in all areas. Our Santiago partner, J. Francisco (Pancho) Humphreys, brought the New York office into the picture and now the two offices handle the engagement jointly.

Portillo, an international ski resort with accommodations for over 300 skiers, is only five and a half hours from Santiago by car or railway. The scenery is spectacular. . . .

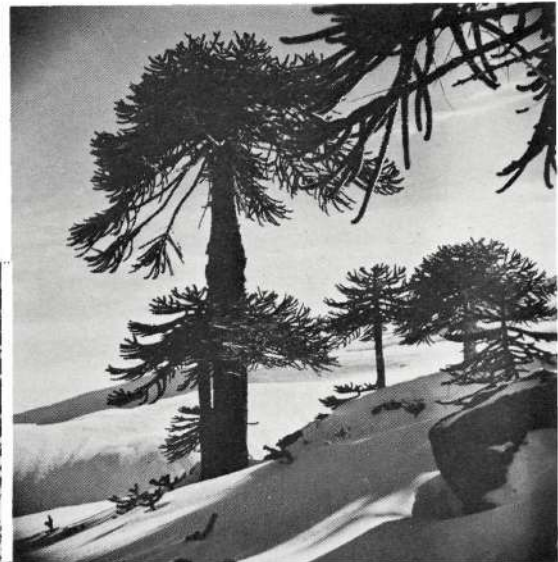
Portillo is 9,400 feet above sea level and the hotel, which overlooks a lake, is protected by a circle of towering mountain crags which rise 25,000 feet or more.

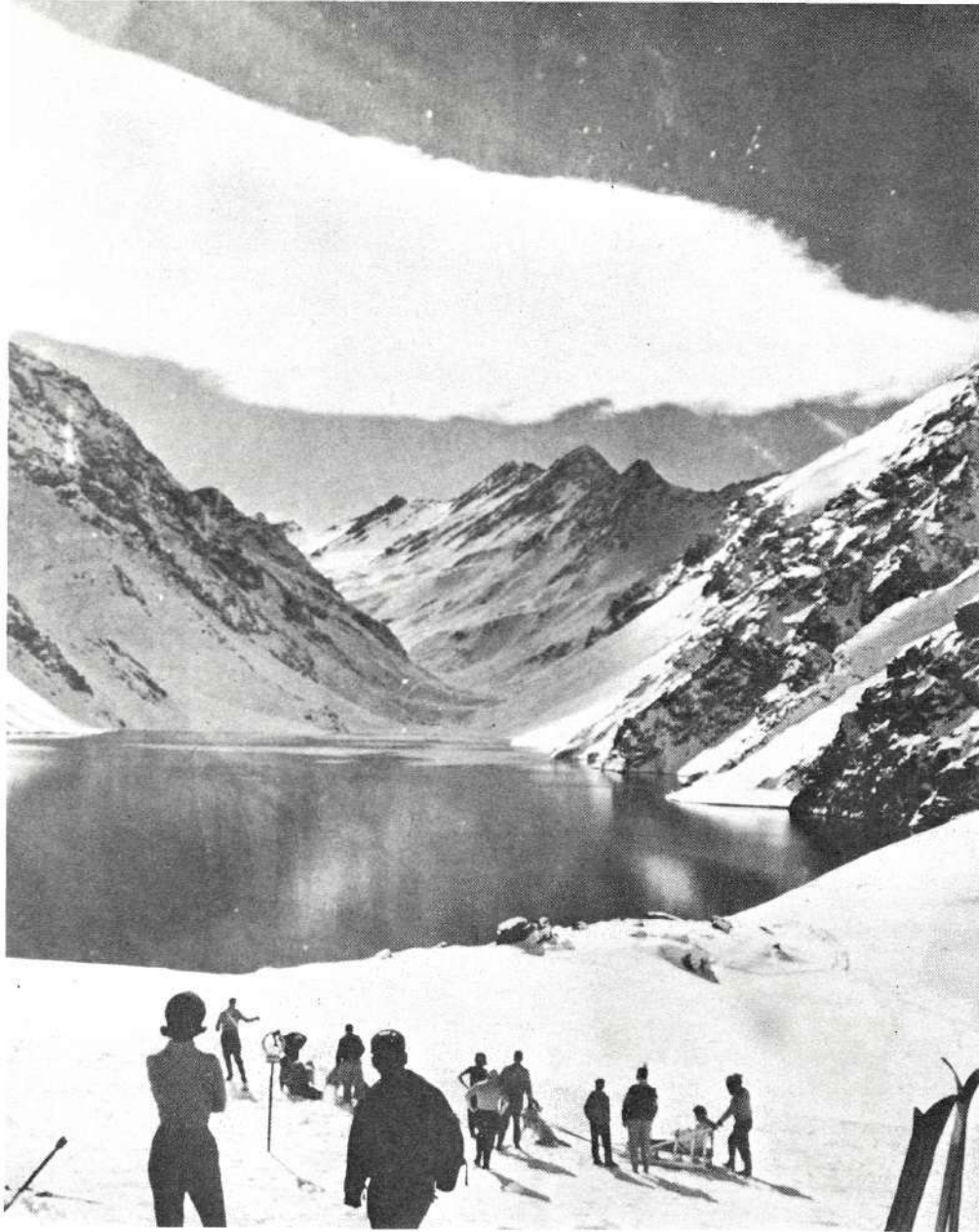
Their skiing season extends from June to the middle of October, and skiers can literally ski right off the premises and on to the slopes. Portillo boasts some of the longest and steepest runs in the world, and will be the scene of the 1963 world ski championships. However, they also hold elementary ski classes on gentle slopes ideal for the raw beginner.

The owners are working to make Portillo an all year round resort that will appeal to both winter and summer sportsmen and vacationers. Their improvements include a skating rink, a swimming pool, a trout-stocked lake, a movie theatre, a night club and the newest in ski lifts. They have also acquired a second ski area known as LaParra, as well as a mountain side restaurant, a bus line servicing the ski resorts, and a tourist agency.

TRB&S

in Chile





*Pictured below at Portillo
are Robert W. Purcell, Mrs. Richard S. Aldrich,
Mrs. Purcell and Mr. Aldrich.*

