

University of Mississippi

eGrove

Touche Ross Publications

Deloitte Collection

1967

Annual partners' meeting, Phoenix, Arizona, Oct 31-Nov 3

Anonymous

Follow this and additional works at: https://egrove.olemiss.edu/dl_tr



Part of the [Accounting Commons](#), and the [Taxation Commons](#)

Recommended Citation

Quarterly, Vol. 13, no. 4 (1967, December), p. 07-09

This Article is brought to you for free and open access by the Deloitte Collection at eGrove. It has been accepted for inclusion in Touche Ross Publications by an authorized administrator of eGrove. For more information, please contact egrove@olemiss.edu.



Annual Partners' Meeting

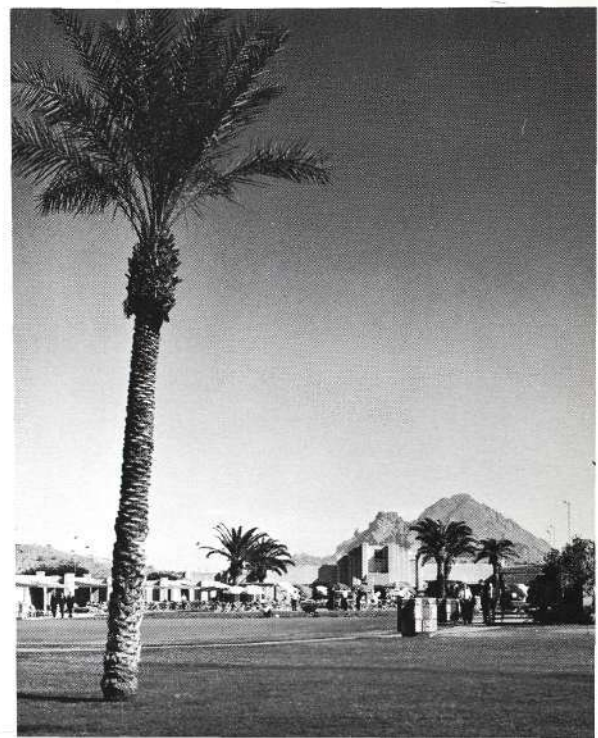
Phoenix, Arizona

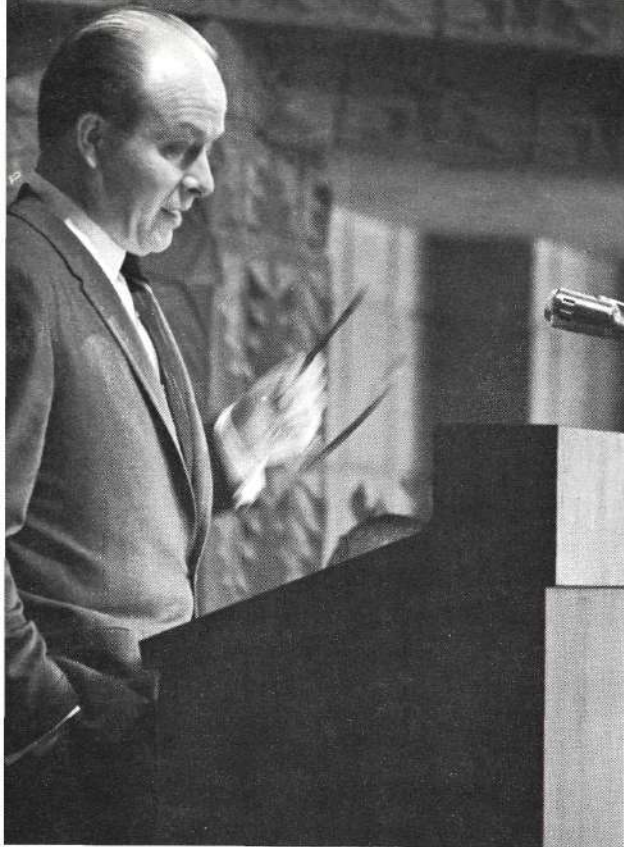
Oct. 31 - Nov. 3



At the annual partners' meeting Touche, Ross partners worked hard and played hard during the four day period spent at the Arizona Biltmore Hotel.

The national directors reported on staff activities and plans for 1968, committees met and reports were given, the new partners were introduced, and presentations covering international activities, quality control, and the new era in information systems were given.





Guest speaker Roy Ash,
president of Litton Industries, Inc.

Representing four different offices are Richard Walsh, Detroit;
J. David Moxley, San Francisco; Gerald A. Polansky, Washington, D.C.;
and Carleton H. Griffin, Denver.



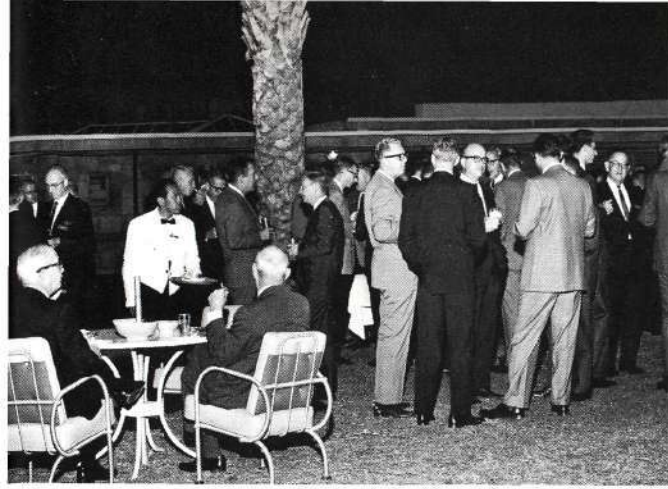
A management services discussion . . .

Joseph F. Buchan, Minneapolis, with New York's Max F. Sporer
and Donald W. Jennings, Detroit.



Thomas A. Wise (left) member of Fortune magazine's
Board of Editors, was a guest speaker. Shown with Mr. Wise
are Kay H. Cowen, Chicago, and Detroit's H. Justin Davidson.





New York's Edwin Heft with E. Palmer Tang, Minneapolis, and Chicago's Clayton Ostlund.

Three retiring partners were honored and received watches as gifts. Shown below are (front row) Nathan Goodman accepting for his brother, Boston's Morris Goodman; G. Leslie Laidlaw, Chicago; and John Hancock, San Francisco. The presentations were made by (back row) Boston's Armin J. Frankel; Allen C. Howard, Chicago; and Milton M. Gilmore, San Francisco.

