

University of Mississippi

eGrove

---

American Institute of Accountants

Deloitte Collection

---

8-8-1913

**We enclose a program of the arrangements for the Annual Meeting to be held in Boston, September 15th to 19th, 1913, Motorist's Guide enclosed**

Harvey S. Chase

American Association of Public Accountants

Follow this and additional works at: [https://egrove.olemiss.edu/dl\\_aia](https://egrove.olemiss.edu/dl_aia)



Part of the [Accounting Commons](#)

---

# American Association of Public Accountants

---

Boston, 8th August, 1913.

To the Members of  
THE AMERICAN ASSOCIATION OF  
PUBLIC ACCOUNTANTS.

We enclose a program of the arrangements for the Annual Meeting to be held in Boston, September 15th to 19th, 1913.

The Committee on annual meeting of the American Association and the members of the Certified Public Accountants of Massachusetts, Inc. sincerely hope that each member may attend and bring the ladies of his family.

To facilitate the work of the Committee in completing the necessary arrangements, will you kindly advise the Secretary of the Committee, using enclosed card, whether or not you will be present and the number you expect will be in your party.

The Committee will be glad to reserve such hotel accommodations as you may require, and unless otherwise requested rooms will be reserved at the Convention's headquarters, the Copley-Plaza Hotel.

The Annual Banquet of the Association will be held at the Copley-Plaza Hotel, Boston, at 7.30 P. M., Thursday, September 18, 1913.

Tickets may be secured at five dollars per plate.

Upon your arrival at Headquarters of the Convention apply at the Information Bureau of the Association and secure your tickets, which will be ready for delivery.

HARVEY S. CHASE, Chairman  
AMOS D. ALBEE,  
GERALD WYMAN,  
WALTER C. WRYE, Secretary

GEO. L. BISHOP,  
AUGUSTUS NICKERSON,  
EDWARD L. PRIDE,  
J. EDWARD MASTERS,  
F. R. C. STEELE,  
WALDRON H. RAND.

# MOTORIST'S ATTENTION

IS CALLED TO THE

## Copley-Plaza Hotel

LOCATED IN COPLEY SQUARE  
BEST PARKING SPACE IN BOSTON

Most convenient location in Boston  
to touring roads from the city

THE PLACE IN BOSTON  
for Motorists to Dine

Our Restaurant offers a cuisine and service  
of superlative excellence

### ROOM RATES

Single room with bath, \$3.00, \$3.50, \$4.00

Double room with bath, \$5.00, \$6.00, \$8.00

### WHAT TO SEE IN BOSTON

**BUNKER HILL MONUMENT** — Revolutionary relics. Open from 8.00 a. m. to 6.00 p. m. Fee, 20 cents.

**FANEUIL HALL** — Military museum of the Ancient and Honorable Artillery Company. Open from 10.00 a. m. to 4.00 p. m., except Saturdays and Sundays. Free.

**STATE HOUSE** — Front part — the "Bullfinch Front," built 1795-1797. Memorial Hall, with the battle flags, statues and portraits.

**SHAW MONUMENT** — Opposite the State House. Memorial to Colonel Robert G. Shaw, commander of the first regiment of colored troops in the Civil War.

**OLD SOUTH MEETING HOUSE** — Washington Street, corner of Milk St. Loan historical collection. Open week-days from 9.00 a. m. to 5.00 p. m. Fee, 25 cents.

**OLD NORTH CHURCH (CHRIST CHURCH)** — Salem St., North End. Oldest existing church in Boston. Open daily. Fee, including view from tower, 25 cents.

**OLD STATE HOUSE** — Head of State St., Memorial halls and historical collections. Open from 9.00 a. m. to 4.30 p. m.; Saturdays from 9.30 to 4.00. Free.

**KING'S CHAPEL** — Tremont and School Sts. Dating from 1754.

**PARK STREET CHURCH** — Corner of Tremont and Park Sts. Dating from 1809.

**TRINITY CHURCH** — Copley Square. H. H. Richardson's architectural masterpiece.

**ST. PAUL'S CHURCH** — Tremont St., opposite the Common. Dating from 1820. Interesting interior. Pew No. 25 that of Daniel Webster.

**PAUL REVERE'S HOUSE** — North Square; also various other old homes and historic sites of the North End.

**MUSEUM OF BOSTON SOCIETY OF NATURAL HISTORY** — Berkeley, corner of Boylston St. Open free Wednesdays, Saturdays and Sundays; other days, fee, 25 cents.

**NEW ART MUSEUM** — Huntington Ave. Open week-days, from 9.00 a. m. to 4.00 p. m., with the exception of Mondays, when the hours are 1.00 to 5.00 p. m., Free on Saturdays and Sundays (Sunday hours from 1.00 to 3.00 p. m.); fee other times 25 cents.

**PUBLIC LIBRARY** — Copley Square. Open daily from 9.00 a. m. to 9.00 p. m. through the summer months (other seasons till 10.00 p. m.); Sunday from 2.00 to 9.00 p. m., summer (10.00 p. m. other seasons.)

**HARVARD UNIVERSITY BUILDINGS AND MUSEUMS** — Cambridge.

**PARKS, BOULEVARDS AND SUBURBS** — Most attractive park system in the United States. Boston Common, Public Garden, Fenway, Middlesex Fells, Blue Hills Reservation, Arboretum. Boston's suburbs are famous for their beauty.

**COPLEY PLAZA HOTEL** — Copley Square, Boston.

### SIDE TRIPS FROM BOSTON

**CONCORD** — Battle Ground; statue of the Minute Man; homes of Emerson, Thoreau and Alcott.

**LEXINGTON** — The Common, where battle was fought; Minute Men monuments; historical houses and tablets.

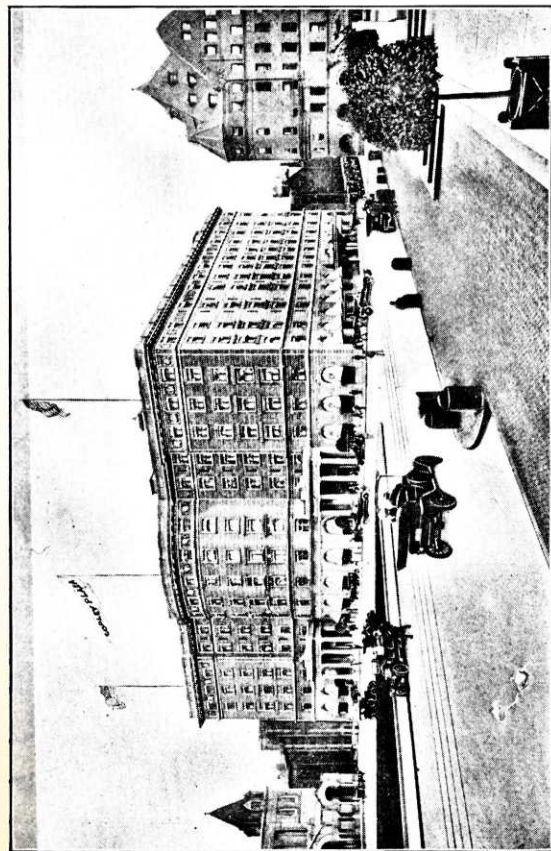
**PLYMOUTH** — Plymouth Rock, Pilgrim Hall, monument to the forefathers.

Copley  
Plaza  
Hotel

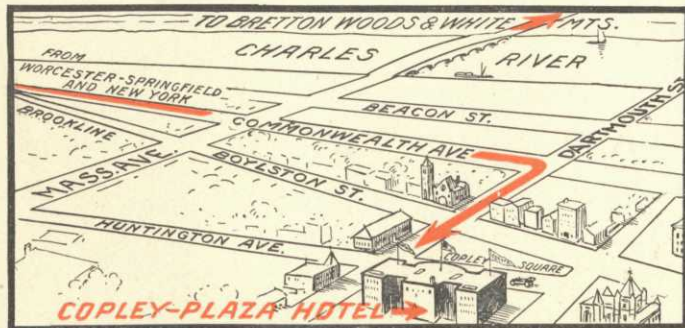
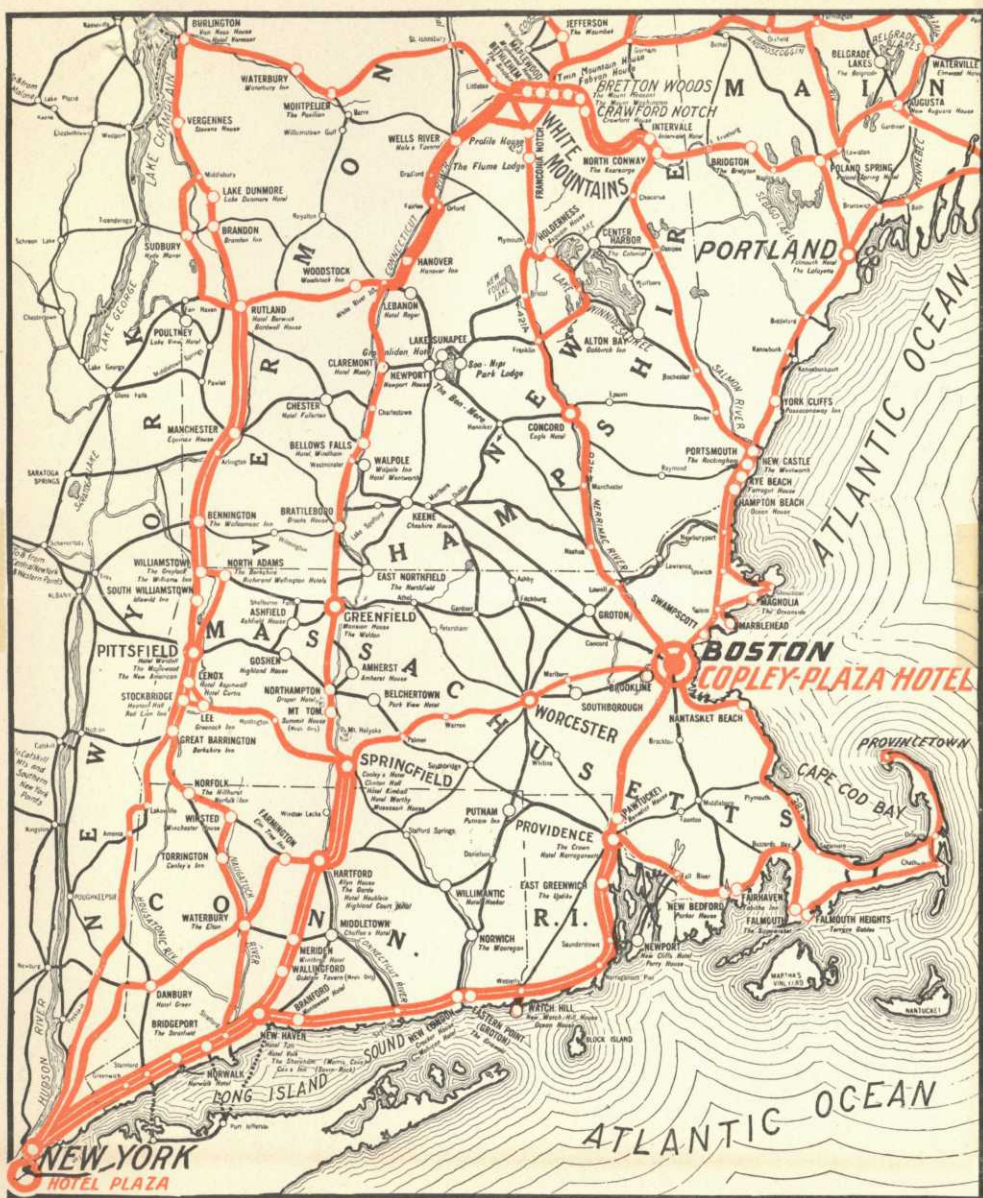
COPLEY SQUARE  
BOSTON, MASS.

FRED STERRY  
MANAGING DIRECTOR

J. C. LAVIN  
MANAGER







**Automobile Mileage to Principal Points  
from Copley Plaza Hotel, Boston, and the Hotel Plaza, New York**

Boston to Bretton Woods via Portland	242 miles	Boston to New York via Springfield	233 miles
Boston to Bretton Woods via Concord	188 miles	Boston to New York via Providence	245 miles
Boston to Pittsfield via Greenfield	154 miles	New York to Bretton Woods via Pittsfield	392 miles
Boston to Provincetown	138 miles	New York to Bretton Woods via Greenfield	347 miles