

University of Mississippi

eGrove

Haskins and Sells Publications

Deloitte Collection

1977

1977 New partners, directors and managers

Anonymous

Follow this and additional works at: https://egrove.olemiss.edu/dl_hs



Part of the [Accounting Commons](#), and the [Taxation Commons](#)

Recommended Citation

H&S Reports, Vol. 14, (1977 summer), p. 13-24

This Article is brought to you for free and open access by the Deloitte Collection at eGrove. It has been accepted for inclusion in Haskins and Sells Publications by an authorized administrator of eGrove. For more information, please contact egrove@olemiss.edu.

1977
NEW PARTNERS,
DIRECTORS
& MANAGERS

1977 New Partners, Directors and Managers

There is a special pride in the announcement of our new partners, directors and managers, special because these people, who are so vital to the future of the Firm, provide the brightest promise of fulfilling its highest ideals and aspirations.

The strength of a firm is in its people and Haskins & Sells always has been blessed with men and women of outstanding character and ability. The people named and shown here have a great common characteristic — a high level of professional competence and integrity. Yet each also has a unique individuality which adds greatly to the character and flavor of the Firm.

It is with great pride, and with even greater confidence in their ability to carry on the finest traditions of the Firm and the profession, that we welcome these men and women to our management group.

Michael N. Chetkovich
Managing Partner

**NEW
PARTNERS**

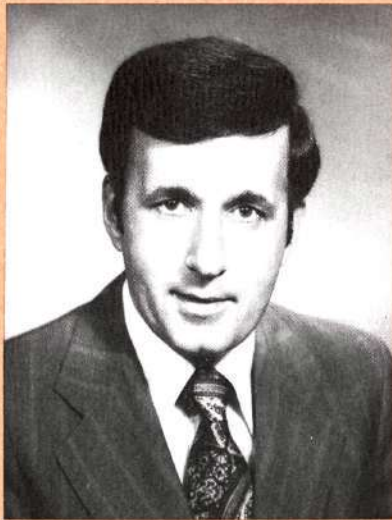
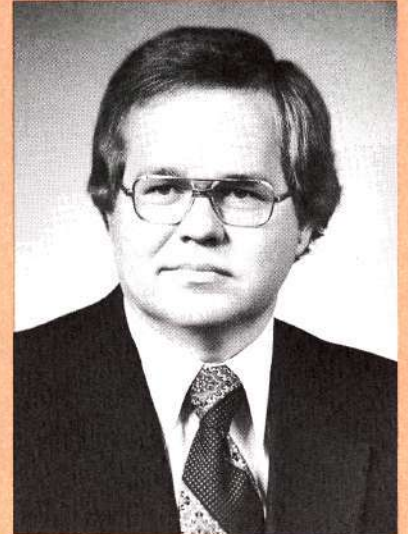
Allyn R. Adams
Cleveland
SBS
BSBA, John Carroll University;
MBA, University of Wisconsin



George E. Betts
DH&S partner, 1972
Hong Kong
Audit
Previous Offices: Seattle,
Columbus, EO, Seoul
BA, College of Idaho



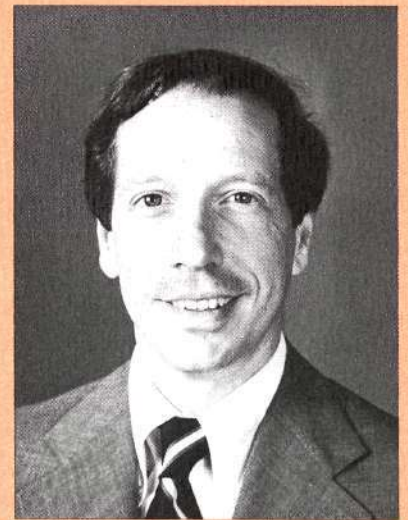
Jerry H. Blurton
Oklahoma City
Audit
Previous Office: Dallas
BBA, University of Texas
(Austin)



Edward J. Braks, Jr.
New York
Audit
BBA, Manhattan College



Franz Capraro
Miami
Tax
BBA, University of Miami



G. William Clapp
Executive Office
Tax
Previous Offices: Greensboro,
Charlotte
BS, University of North Carolina

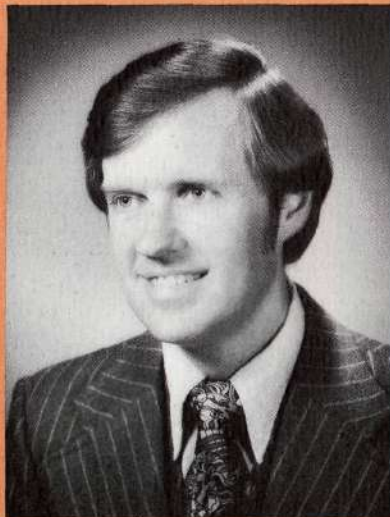
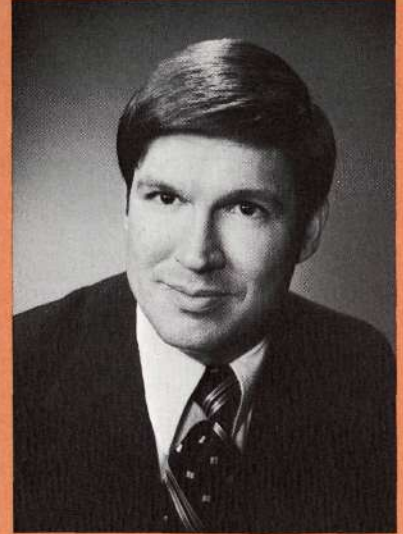
Ronald J. Consiglio
Los Angeles
Audit
BS, San Fernando Valley
State College



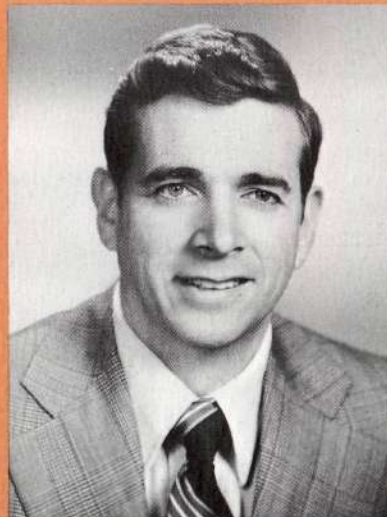
Anthony R. Conti
New York
Audit
BBA, Pace College



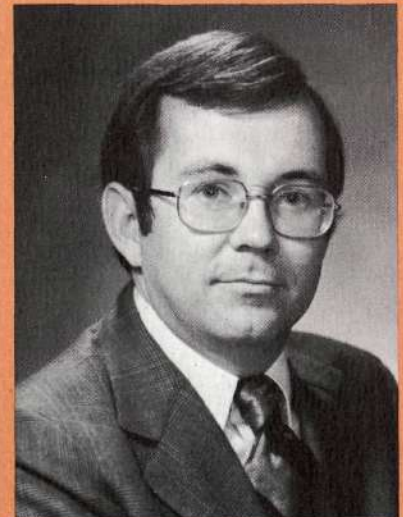
James E. Copeland, Jr.
Atlanta
SBS
BBA, Georgia State College



Robert H. Cox
Cincinnati
Audit
BBA, MBA, University of
Michigan

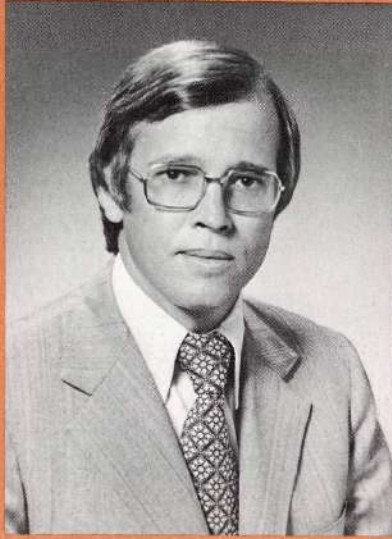


Thomas P. Cox
Portland
SBS
Previous Offices: Seattle,
Medford
BS, Seattle University

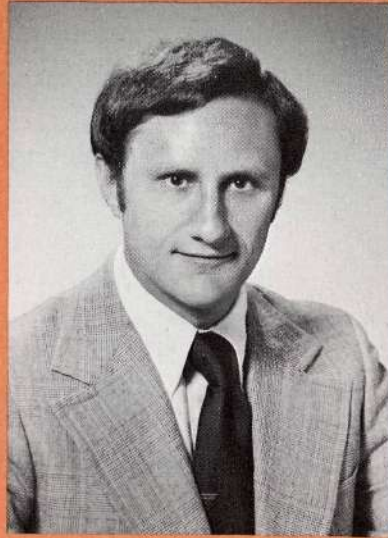


James L. Curry
Atlanta
Tax
BA, Duke University;
MBA, University of Michigan

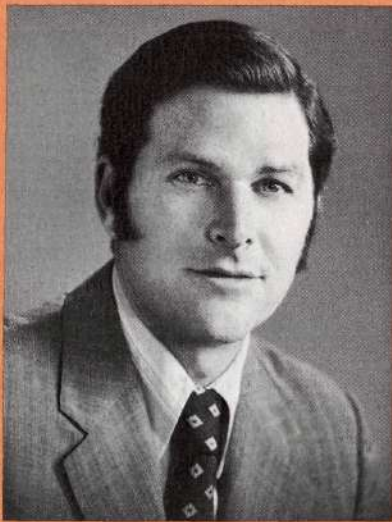
John E. Ellingsen
San Francisco
Audit
BS, MBA, University of
California



Richard J. Fineberg
San Francisco
Audit
BA, MBA, Michigan State
University



Peter Geleta
Philadelphia
Audit
Taylor College



David Goldman
Phoenix
Audit
Previous Offices: Los Angeles,
EO, Miami
BS, MA, University of Arizona

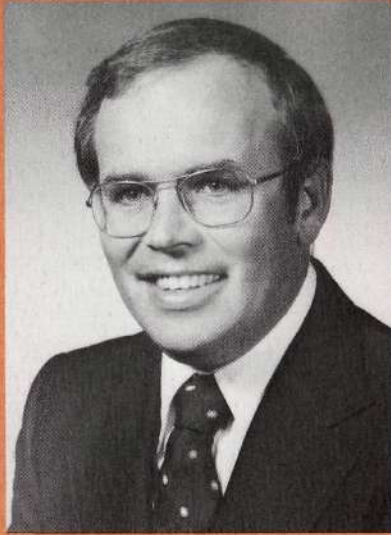


Richard L. Green
Kansas City
Audit
BBA, University of Wichita

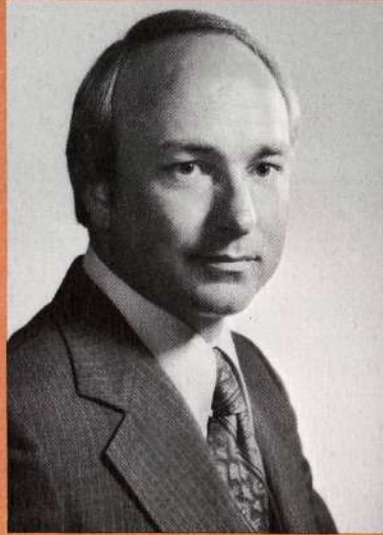


Norbert J. Janis
DH&S partner, 1973
Bogotá
Audit
Previous Offices: Pittsburgh,
San Juan, Guayaquil
BBA, University of Pittsburgh

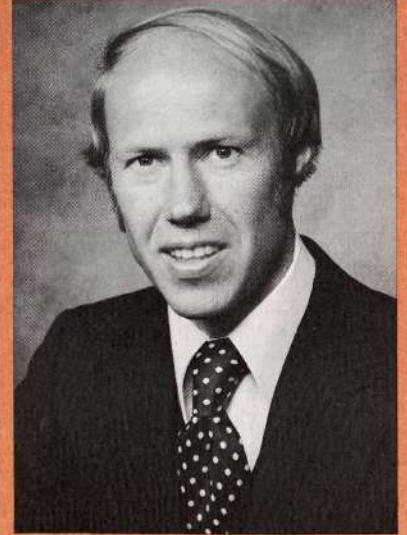
Arthur W. Johnson, Jr.
Orange County
SBS
Previous Office: Los Angeles
BA, University of Redlands



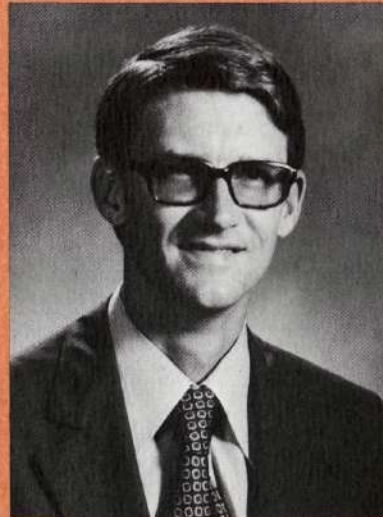
Gary T. Jones
Houston
SBS
Previous Office: EO
BBA, University of Houston



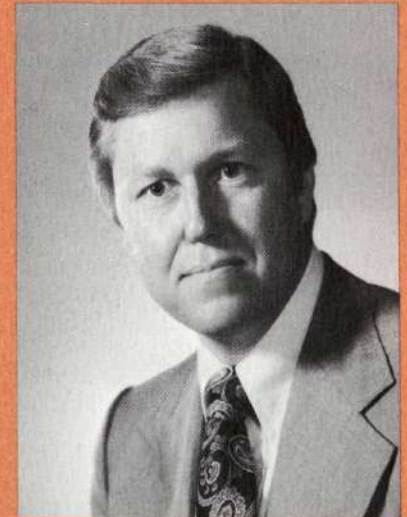
Marvin E. Korf
Colorado Springs
Tax
Previous Office: Denver
BSBA, Drake University



A. Daniel Luechtefeld
Tulsa
Tax
Previous Office: St. Louis
BS, University of Illinois



John T. Marrack
Hilo
Audit
Previous Offices: Honolulu,
Kahului
BA, Claremont Men's College

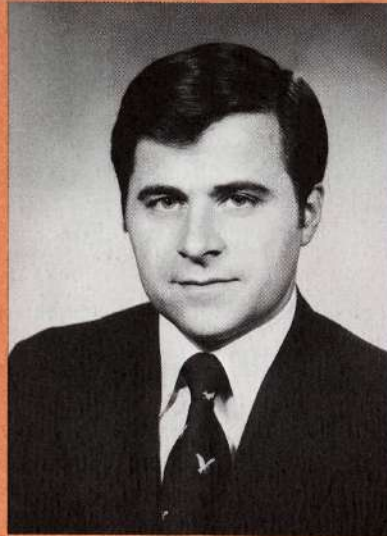


Herbert E. Noack, Jr.
Houston
Tax
BBA, Texas University

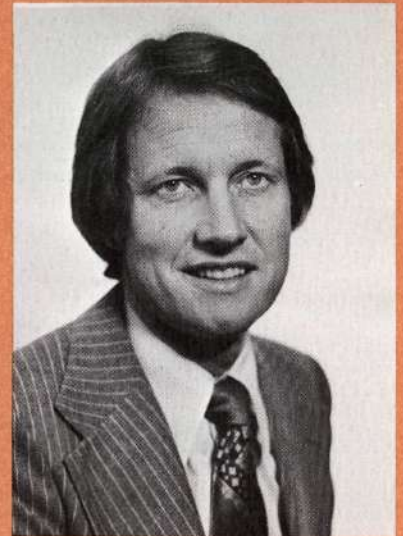
Dennis L. O'Connor
Houston
Audit
Previous Office: Boston
BS, Boston College



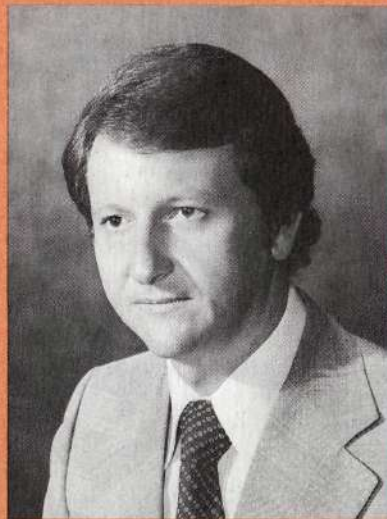
William G. Parrett
New York
Audit
BBA, St. Francis College



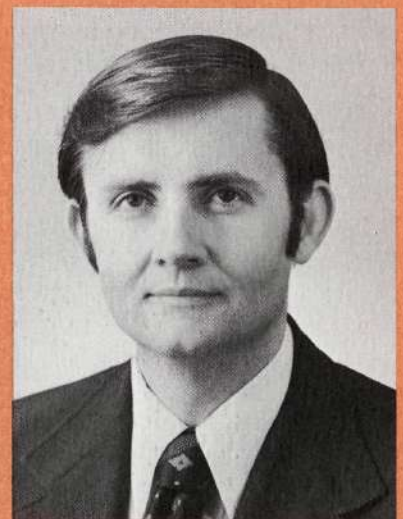
Allan W. Preusch
Los Angeles
Audit
BS, University of Southern
California



Francis M. Ricci
Denver
Audit
BS, MBA, University of
Montana

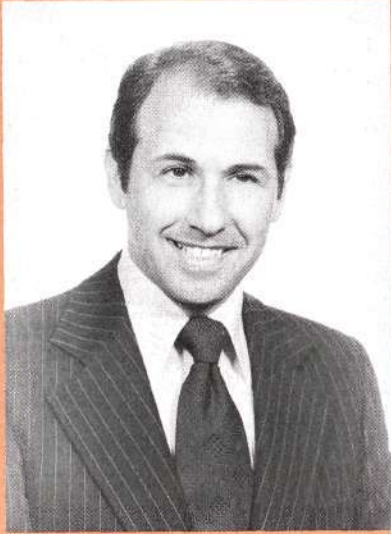


Gerald W. Richards
DH&S partner, 1976
Caracas
Audit
Previous Office: Seattle
BS, University of Montana



Spencer Robinson, Jr.
DH&S partner, 1974
Tokyo
Audit
Previous Office: Jacksonville
BSIM, Georgia Institute of Technology;
BS, Jacksonville University

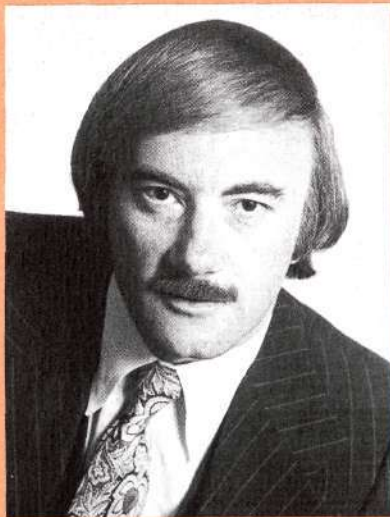
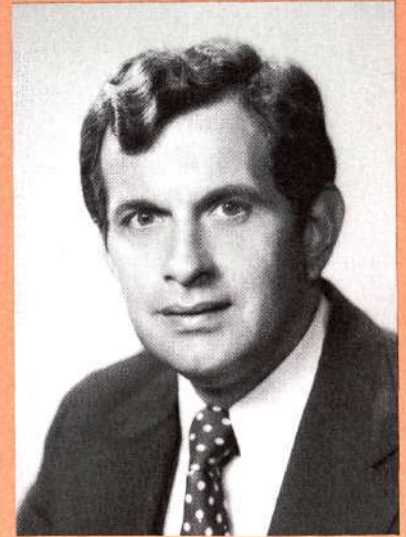
Peter N. Ruma
Toledo
Audit
Previous Office: Cleveland
BSBA, Kent State University;
MBA, Western Reserve
University



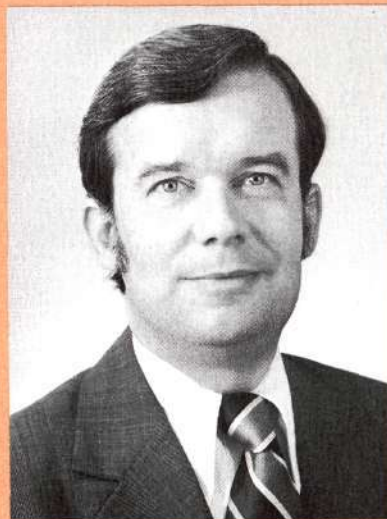
Jim R. Saunders (D)
Charlotte
MAS
Previous Office: Atlanta
BS, University of North Carolina



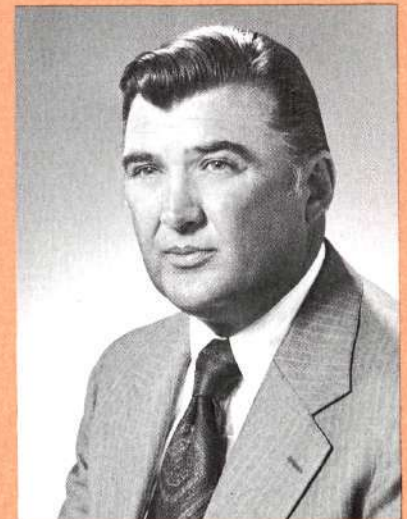
Joseph G. Seck, Jr.
Richmond
Audit
Previous Office: Dayton
BSBA, John Carroll University



Howard M. Siegel
Long Island
Tax
Previous Office: New York
BA, New York University;
LLB, Fordham University
Law School



Stewart G. Siewert
DH&S partner, 1972
Tokyo
Audit
Previous Offices: Atlanta, EO
BS, Tennessee Polytechnic
Institute; MS, University of Tennessee



Fulton M. Smith, Jr. (D)
San Francisco
MAS
Previous Office: Los Angeles
BS, Texas Tech University

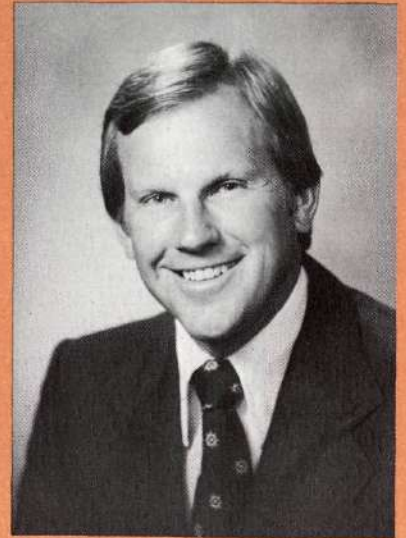
Douglas E. Sobolik
Washington
Tax
Previous Offices: San Francisco,
EO Washington
BSBA, MS, University of
North Dakota



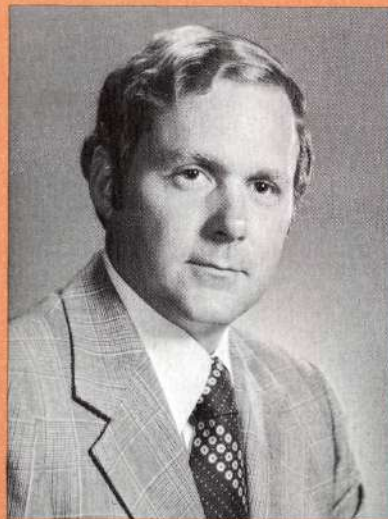
Robert E. Sohr
New York
Audit
Previous Office: EO
BBA, Iona College



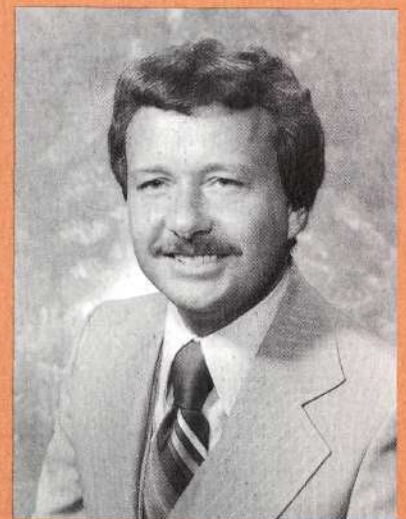
Brice K. Sorenson
Salt Lake City
Tax
BS, Brigham Young University



William G. Van Note, Jr.
Washington
MAS
Previous Offices: Rochester,
Philadelphia
BBA, Clarkson College of
Technology

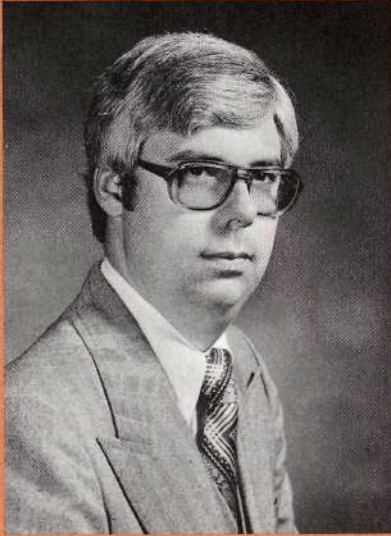


Jack M. Vaughan
Houston
Tax
BBA, University of Texas;
JD, University of Houston

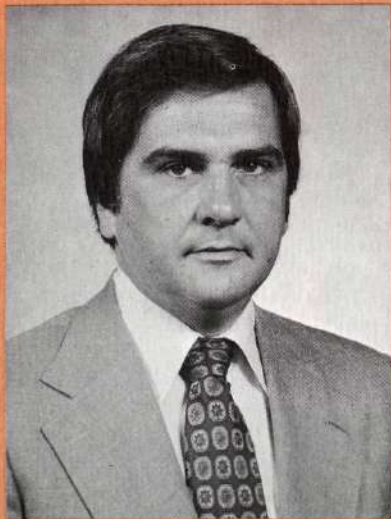


Ralph J. Wagner
Ft. Lauderdale
Audit
Previous Offices: Chicago, EO
BS, Bradley University

Jon C. Whiteman
Saginaw
Audit
Previous Office: Detroit
BS, Michigan State University



Bill C. Wilson
Pittsburgh
Tax
Previous Offices: Los Angeles,
Washington
BS, University of Southern
California



John E. Wosoba
Moline
Audit
Previous Office: Chicago
BA, Augustana College



James N. Zaloudek
Chicago
Audit
BS, Bradley University

NEW

MANAGERS

Atlanta

Stephen J. Coulter
R. Michael Hembree
Thomas C. Waggoner

Baltimore

William B. Noll

Bergen County

Robert H. Attmore
M. Robert Harshaw

Birmingham

Philip N. Lewis

Boston

Jay R. LaMarche
Paul K. McGrath
Robert K. Morine, Jr.
Kevin P. Sheehan
James G. Sullivan
Howard L. Rivenson

Buffalo

Thomas H. Kelly

Charlotte

Guy L. Forcucci
Wayne T. Stephens

Chicago

William A. Carter
Robert F. Doak
Walter F. Lindberg
Daryl E. McPherson
Raymond H. Piiparinen
Dow B. Roettger
Barry L. B. Swenson

Cincinnati

Kenneth L. Aulen
Paul A. Criscillis, Jr.
Mark J. Nocito
J. Mitchell Szorcik

Cleveland

Paul T. Becka
Marilyn J. Gagen
Robert M. Jaeckin
Michael D. Kane

Columbus

George C. Biehl
David R. Claerbout
Bruce M. Lloyd
Richard F. Norris

Dayton

Larry E. Cooke
Theodore N. Vukcevic
Donna J. Williams

Denver

David H. Batchelder
Ralph E. Lawson
Fred T. Tanquary III

Des Moines

Kenneth R. Perkins

Detroit

Fred P. Calderone
Philip M. Goy
Henry D. Jakubiec
Leo L. Kessel
Gary F. Reetz
Victor Martinelli

Executive Office

John W. Gruner (São Paulo)
Robert E. Tokarz (Caracas)
Timothy R. Young

Fort Lauderdale

Kary M. Johnson
Robert J. Stirk

Fort Worth

Norman E. Bonner
William D. Stewart, Jr.

Grand Rapids

Eric A. Adamy
James L. Ransford

Greensboro

L. Frank Melazzo

Hartford

Michael J. Beecher

Honolulu

Gloria J. Andrus

Houston

James L. Davis
Timothy S. Lucas
Keith D. Martin
H. James Stover

Jacksonville

Robert W. Ennis

Kansas City

John S. Collins
Arthur L. Farris

Los Angeles

Sally J. Anderson
Charles V. Benz
Michael W. Farrer
James W. Ford
James H. Hugar
Gary F. King
Alan H. Lund
John W. Peth

Louisville

Richard A. Kerley

Memphis

W. Richard Brown
Kenneth C. Sartain

Miami

David C. Collins
William H. Erickson
Sergio R. Fernandez
Howard F. Kershaw
Edmond G. Little
David M. Nasso
Mark Schroeder
William A. Tallent
Ed S. Torgas

Milwaukee

Stephan J. Chevalier

Minneapolis

Stephen L. Bakke
William E. Bennett
Dale H. Hokanson
John P. Wheatley

Nashville

James L. Springer, Jr.

Newark

Ronald E. Bombolis
Raymond J. Harter, Jr.
Dennis L. O'Brien

New Haven

Harry X. Cashin III
Richard A. Reynolds

New Orleans

Albert P. Autin, Jr.
Thomas M. Kitchen
Lloyd A. Tate, Jr.

New York

Robert W. Brooks
Thomas J. Burns
Gennaro A. D'Amore
Nicholas J. Desiderio
John B. Evans
John G. Fleming, Jr.
Thomas G. Grilli, Jr.
Steven M. Kahan
Francis X. McGuire
James J. McVey
William G. Macomber
Melvin Rubin
Frederick M. Thurm
Douglas W. Watts
Richard A. Weiss

Oakland

Karl M. Dobrinich

Oklahoma City

Randel T. Dunn

Omaha

James E. Czyz
Richard R. Ekstrom
James J. Scheuer

Orange County

Brenton L. Murdoch

Orlando

Lance D. Smith

Philadelphia

John M. Bukata
Barbara F. Hirshout
James P. Lavin

Phoenix

Richard P. Christensen
Dennis G. Thompson

Pittsburgh

Richard W. Fisher
Jimmie R. Foster
Joseph J. Mikelonis, Jr.

Portland

Thomas L. Hainline
James R. Martin

Rochester

Stephen E. Golden II
Robert J. Updaw

Saginaw

Stephen G. Whisner

Saint Louis

Donald J. Schepker

Salt Lake City

Paul G. Child
Lane A. Summerhays

San Antonio

Charles G. Chaffin

San Diego

Stanley W. Gott
Michael J. O'Leary

San Francisco

John C. Appel
Roy M. Avondet
Howard T. Hoover
Lynne C. Wisley

San Jose

Robert H. Leyman, Jr.

Seattle

Michael C. Duffield
John N. Greenway
Eddie L. Hendrikson
Terence V. O'Keefe
Fred E. Williams

South Jersey

Jack R. Clemens
George M. Krause

Syracuse

Angelo J. Gallo
D. Ronald Misner

Toledo

Donald B. Poling

Tulsa

Donald G. Temple

Ventura County

James L. Williams

Washington

George R. Tilbury

White Plains

Gerald H. Martin

1977

NEW PARTNERS,

DIRECTORS

& MANAGERS
