

University of Mississippi

eGrove

Daily Mississippian (all digitized issues)

Daily Mississippian

3-17-2015

March 17, 2015

The Daily Mississippian

Follow this and additional works at: <https://egrove.olemiss.edu/thedmonline>

Recommended Citation

The Daily Mississippian, "March 17, 2015" (2015). *Daily Mississippian (all digitized issues)*. 1137.
<https://egrove.olemiss.edu/thedmonline/1137>

This Newspaper is brought to you for free and open access by the Daily Mississippian at eGrove. It has been accepted for inclusion in Daily Mississippian (all digitized issues) by an authorized administrator of eGrove. For more information, please contact egrove@olemiss.edu.

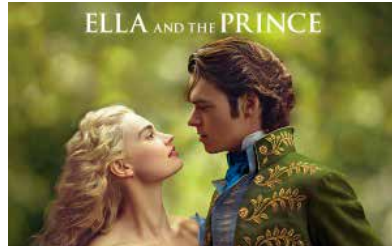
MISSISSIPPIAN

THE STUDENT NEWSPAPER OF THE UNIVERSITY OF MISSISSIPPI SERVING OLE MISS AND OXFORD SINCE 1911 Visit theDMonline.com @thedm_news

news
Electric cars slowly emerging throughout Mississippi
Page 3



lifestyles
Movie review: 'Cinderella'
Page 4



sports
Do the Rebels compare to the 2012-2013 team?
Page 7



Green Grove Initiative seeks new volunteers



COURTESY: ISABELLA CARUSO



COURTESY: ISABELLA CARUSO



COURTESY: ISABELLA CARUSO

ISABELLA CARUSO
igcaruso@go.olemiss.edu

The Green Grove Initiative was launched by The Office of Sustainability in 2008 and is still running strongly today. The initiative is run by a team of gameday coordinators who work in the Office of Sustainability as part of the Green Student Intern Program. Landscape Services and the athletics department collaborate very closely with the Green Grove Initiative to help ensure the program is successful.

Hallie Grace Haines, senior project manager for the Green Grove Initiative, hopes the initiative will become a recog-

nizable and expected element of the Ole Miss gameday experience.

"We are all capable of playing our part in reducing our environmental impact and ensuring the rare beauty of the Ole Miss campus for generations to come," Haines said.

The primary goal of the Green Grove Initiative is to decrease the amount of waste that ends up in landfills as a result of gameday waste. This is maintained by increasing recycling practices and the use of reusable containers in tailgating areas as well as Vaught-Hemingway Stadium.

Lindsey Abernathy, project coordinator of the initiative,

said all are welcome to volunteer for the initiative and applications for student positions as gameday coordinators will be accepted late this semester.

"We work closely with athletics and landscape services to illustrate to fans that recycling in the Grove and stadium is easy and is expected," Abernathy said.

The Green Grove volunteers meet prior to every home football game on the Student Union Plaza as well as at the Oxford Recycling Center, for those volunteers who choose to help with recycling. In 2014, the Initiative engaged nearly 400 student volunteers, a record for program.

This football season, the Green Grove Initiative collected 12,150 pounds of recyclables, achieving a 3 percent diversion rate, a new record for the university. Abernathy sees plenty of room for improvement since there was a total of 398,420 pounds of waste generated in the Grove during this football season.

Abernathy hopes to continue to break records with the Green Grove Initiative in the future.

"We all love the Grove, and this is one way to help keep it beautiful," Abernathy said.

For information about volunteering for The Green Grove Initiative, visit green.olemiss.edu.

Holiday provides Big Event funding

CAROLINE ABIDE
pcabide@go.olemiss.edu

In addition to the usual St. Patrick's Day traditions in Oxford, this year a local business and student organization are pairing up to benefit the community.

Tonight At "St. Paddy's Day" at Locals Restaurant and Bar, 15 percent of the proceeds will go to Ole Miss' Big Event.

Caroline Loveless, co-director of the Big Event, explained that the money raised would help cover the costs of T-shirts, which run around \$10,000 in expenses, as well as fees for DJs the morning of the event, some project supplies and set-up costs for the registration area.

"We are specifically interested in students coming to celebrate St. Paddy's Day but are welcoming community members to stop in for dinner as well," Loveless said.

Loveless also said the Ole Miss basketball game would be televised for all patrons to enjoy.

Dinner at Locals goes from 5 to 9 p.m., and the bar will be running from 9 p.m. to midnight.

Freshman biology major Mary Grace Taylor expressed confusion over the lack of St. Patrick's Day festivities.

"I'm actually disappointed that there's not as much going on in Oxford for St. Patrick's Day. It seems like a holiday that would be really suited to Ole Miss and our whole community," Taylor said.

Other students, however, are intent on celebrating St. Patrick's Day by heading to the Square to take advantage of holiday specials.

"I've heard that some bars, like the Blind Pig, are doing specials on Jameson shots, and I heard that Funky's may be doing their special Grove juice because it's green and all," junior pharmacy major Marlene Nguyen said. "So, me and my friends are going to do our own pub crawl."

**THE DAILY MISSISSIPPIAN
EDITORIAL STAFF:**

LACEY RUSSELL
editor-in-chief
dmeditor@gmail.com

SARAH PARRISH
managing editor
dmmanaging@gmail.com

MACKENZIE HICKS
copy chief
thedmcopy@gmail.com

**LOGAN KIRKLAND
MAGGIE MCDANIEL**
news editors
thedmnews@gmail.com

KYLIE MCFADDEN
assistant news editor

DYLAN RUBINO
sports editor
thedmsports@gmail.com

CLARA TURNAGE
lifestyles editor
thedmfeatures@gmail.com

SIERRA MANNIE
opinion editor
thedmopinion@gmail.com

CADY HERRING
photography editor
thedmphotos@gmail.com

**RACHEL GHOLSON
ALLI MOORE
ELLEN WHITAKER**
design editors

KRISTIN JACKSON
digital content coordinator

ADVERTISING STAFF:

EVAN MILLER
advertising sales manager
dmads@olemiss.edu

**EMILY FORSYTHE
CAROLYN SMITH
PIERRE WHITESIDE**
account executives

**MARA BENSING
SARAH DRENNEN
MARYA PAOLILLO
KIM SANNER**
creative designers

**S. GALE DENLEY
STUDENT MEDIA CENTER**

PATRICIA THOMPSON
Director of Student Media and
Daily Mississippian Faculty
Adviser

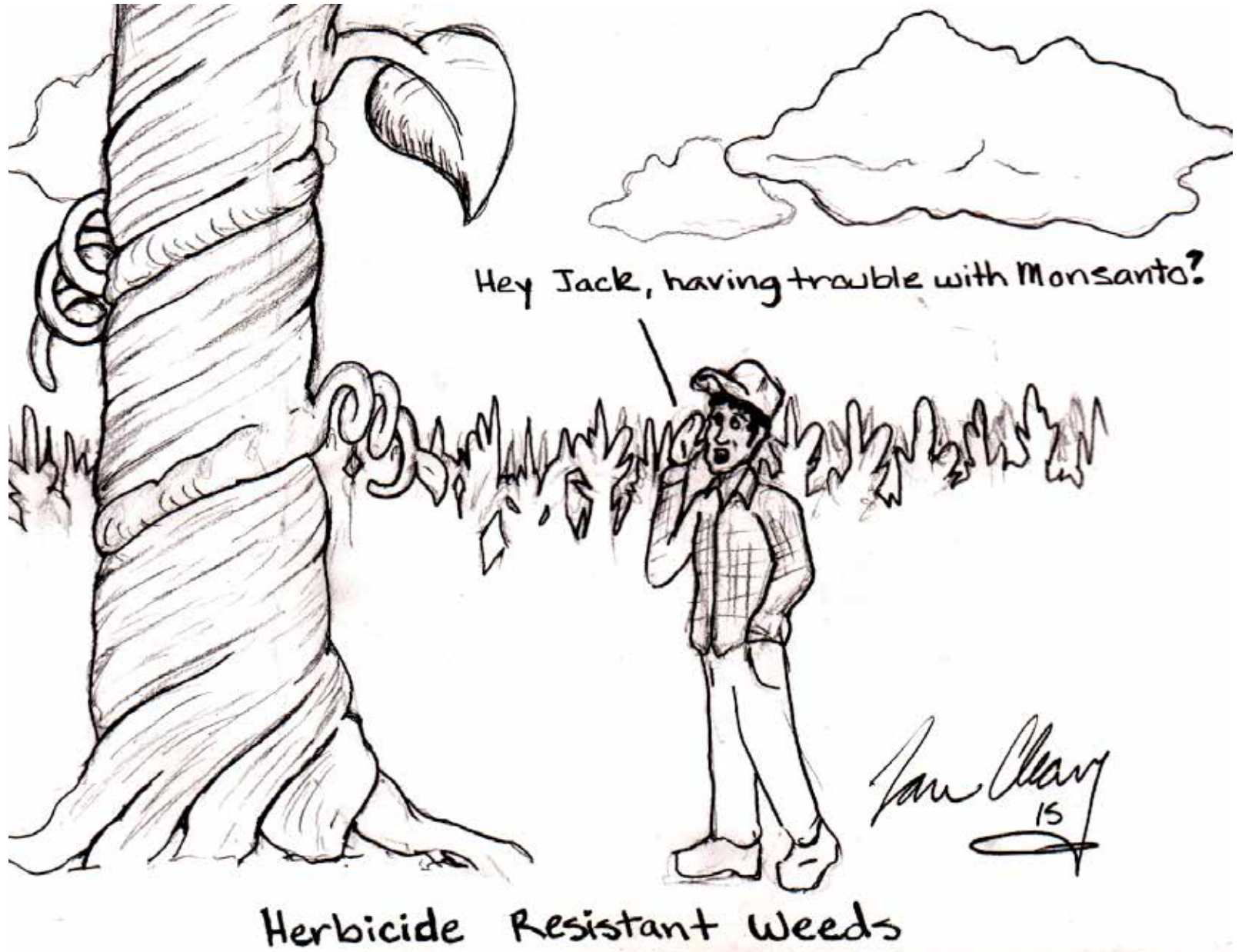
ROY FROSTENSON
Assistant Director/Radio and
Advertising

DEBRA NOVAK
Creative Services Manager

MARSHALL LOVE
Daily Mississippian
Distribution Manager

JADE MAHARREY
Administrative Assistant

DARREL JORDAN
Broadcast Chief Engineer



Letter to the Editor: O.U.T. of options

I'm certain that I'm not the only one who has an issue with Oxford's bus system. I carefully choose the word system because calling it a bus service would imply that a service is actually being done. The reason I now avoid the O.U.T. like the plague is because it's a massive inconvenience, consistently late and tragically stuck in the past while the university moves forward.

Earlier this year, there was a two-week stretch where I took the bus five times. Four of those five times, the bus driver stopped the very crowded bus at the law school to smoke.

Do we ever see pilots flying from New York to Los Angeles stop in Kansas City for a quick smoke? Is that how professionals handle their business?

On the issue of inconvenience, I am also certain I'm



Students ride the O.U.T. Bus to campus in the morning Sept. 10, 2014. (FILE PHOTO)

not alone when I say that the buses need to run to the Square on Friday and Saturday nights. By not running buses to the Square on these nights, the city government puts students in a tough situation:

Drink and drive or pay for a taxi. In either case, the student loses.

The city's very obvious support of the taxi service means increased tax revenue, but where is the government's

money going?

Certainly not towards anything helping the students. Demanding students to take an online Alcohol Education course and then denying them a free and safe way home from bars is grossly irresponsible.

I urge the student body not to settle. The O.U.T. is an affront to public transportation, but it doesn't have to be this way. Things will remain the same unless people get together and lobby for serious improvements.

Oxford University Transit's Superintendent Ron Biggs can be reached by phone at 662-234-3540 and email at rbiggs@oxfordms.net

*Jonathan de Steuben
sophomore English major*

THE DAILY
MISSISSIPPIAN

S. Gale Denley Student
Media Center
201 Bishop Hall,
P.O. Box 1848
University, MS
38677-1848

Main Number:
662.915.5503
Business Hours:
Monday-Friday,
8 a.m.-5 p.m.

The Daily Mississippian is published Monday through Friday during the academic year, on days when classes are scheduled.

Contents do not represent the official opinions of The University of Mississippi or The Daily Mississippian unless specifically indicated.

ISSN 1077-8667

The Daily Mississippian welcomes letters to the editor. Letters should be addressed to The Daily Mississippian, 201 Bishop Hall, P.O. Box 1848, University, MS, 38677-1848, or e-mailed to dmletters@olemiss.edu.

Letters should be typed, double-spaced and no longer than 300 words. Letters may be edited for clarity, space or libel. Third-party letters and those bearing pseudonyms, pen names or "name withheld" will not be published. Publication is limited to one letter per individual per calendar month.

Letters should include phone and email contact information so that editors can verify authenticity. Letters from students should include grade classification and major; letters from faculty and staff should include title and the college, school or department where the person is employed.



**MISSISSIPPI
press
ASSOCIATION**

MEMBER NEWSPAPER

Electric cars slowly emerging throughout Mississippi

NATALIE WILLIAMS
nlwilli3@go.olemiss.edu

“Going Green” is a growing trend around the nation, and it has recently become more popular in Mississippi. In The Princeton Review’s Guide to 332 Green Colleges of 2014, The University of Mississippi was rated as the greenest college in the state.

Through its support of plug-in electric vehicles, the university is moving toward a more sustainable and efficient campus. There are currently three car-charging stations located on campus. One station is located on the north side of Lamar Hall and is used specifically for Nissan Leafs. The other two are located on the west side of the Center for Manufacturing Excellence.

“A university such as The University of Mississippi is thinking into the future of motor transport, and we definitely want to be on the front of technical developments whenever possible,” said Ian Banner, director of facilities planning and university architect. “This is especially true when it comes to energy efficiency, fossil fuel depletion and sustainability.”

The Department of Parking and Transportation said it has not been contacted about increasing the amount of charging stations on campus, and they are unaware if anyone is using the station near Lamar.

“We currently do not restrict the charging space to electric vehicles only because of the lack of demand,” said Hal Robinson, associate director for geoinformatics programs.

Most commuters live within 10 miles of the university. This close proximity to campus may be the cause for such a low demand of charging stations. With most electric vehicles averaging a range of 40 miles, Robinson believes most owners of electric vehicles are not typically



PHOTO BY: KAYLA BEATTY

A car charging station is seen on campus earlier this semester.

required to charge the vehicle when away from home.

In reference to a detailed account of what vehicles typically use the stations on campus, Robinson said the management software does not require specific information about the vehicles and some information is voluntary. He said there appears to be about 70 Toyota Priuses registered on campus, but there is no information about the type of Prius — Hybrid or Plug-in.

In November 2014, Green-Tech Automotive opened an

Electrical Vehicle Production Plant in Tunica. This manufacturer is one of the top “green” automotive producers in the country. At the new site, the company plans to produce a zero-emissions vehicle that can be recharged with a 110 AC or 220V AC wall outlet.



The Mark **NOW LEASING**

2 Bed Bath Starting at **\$925**

Rent includes basic cable, highspeed internet, water and trash. Application fee waived when this ad is mentioned.

Located on Old Taylor Road, Oxford **662.234.8718**

Willie Price Lab School
2015-2016
3K Enrollment
OPEN

Children that turn three on or before September 1, 2015 are eligible for enrollment in our 3K program for the 2015-2016 school year.

WP
WILLIE PRICE
LAB SCHOOL

If you are interested, please contact our office.
662.915.7444
williepr@olemiss.edu

Looking For a Job?

THE 8th ANNUAL
SCHOOL OF APPLIED SCIENCES
CAREER FAIR

TOMORROW, March. 18th
10:00 a.m. until 2:00 p.m.
in the ballroom at the Inn at Ole Miss

ADMISSION IS FREE

Talk to potential employers from law enforcement agencies, hotels, restaurants, parks, recreation centers, medical and rehabilitation centers, child welfare and adult protection agencies, residential treatment centers, and more...

THE UNIVERSITY OF MISSISSIPPI
School of Applied Sciences

The Inn
AT OLE MISS
HOTEL & CONFERENCE CENTER

COME BY AND CHECK OUT CAREERS WHERE HUMAN SCIENCES AND SERVICES INTERSECT

ASB
ASSOCIATED STUDENT BODY
THE UNIVERSITY OF MISSISSIPPI

Department of Justice

Applications Available for the following positions:

- Deputy Attorney General of Elections
- Deputy Attorney General of Code and Constitution
- Deputy Attorney General of Communications
- Election Commissioners

Due Saturday, **March 21** by 5:00pm
in the ASB Office, Union 408

Get involved in your ASB!

Movie Review: 'Cinderella'

COLTON HERRINGTON
cjherri1@go.olemiss.edu

Rating: A

Disney's live action update of its beloved 1950 animated classic is a lavish makeover to the "Cinderella" tale and a new classic in its own right. From director Kenneth Branagh, "Cinderella" is sweet, whimsical and – most importantly – surprisingly layered and affecting, making audiences fall head over heels for Ella "Cinderella" (Lily James) and company.

As the latest entry in Disney's live-action re-imaginings of films from its animated roster – with disappointments like 2010's "Alice in Wonderland" and last year's "Maleficent" coming to mind – "Cinderella" gracefully dances circles around similar fare, effectively becoming the belle of the ball and setting a new bar for Disney.

In this outing Disney succeeds

by assembling a team for "Cinderella" that manages to both capture the heart of the original film while also sprinkling dashes of new magic for a fresh experience.

At the head of said team is director Kenneth Branagh, who has inspired his cast to avoid campiness in favor of something deeper and more realistic. This should come as no surprise given Branagh's experience with directing motion pictures based on much denser material, like William Shakespeare's "Henry V" and "Hamlet." Despite "Cinderella" being based on a light-hearted fantasy film, Branagh's direction works thanks to an unexpectedly thorough, detailed screenplay written by Chris Weitz.

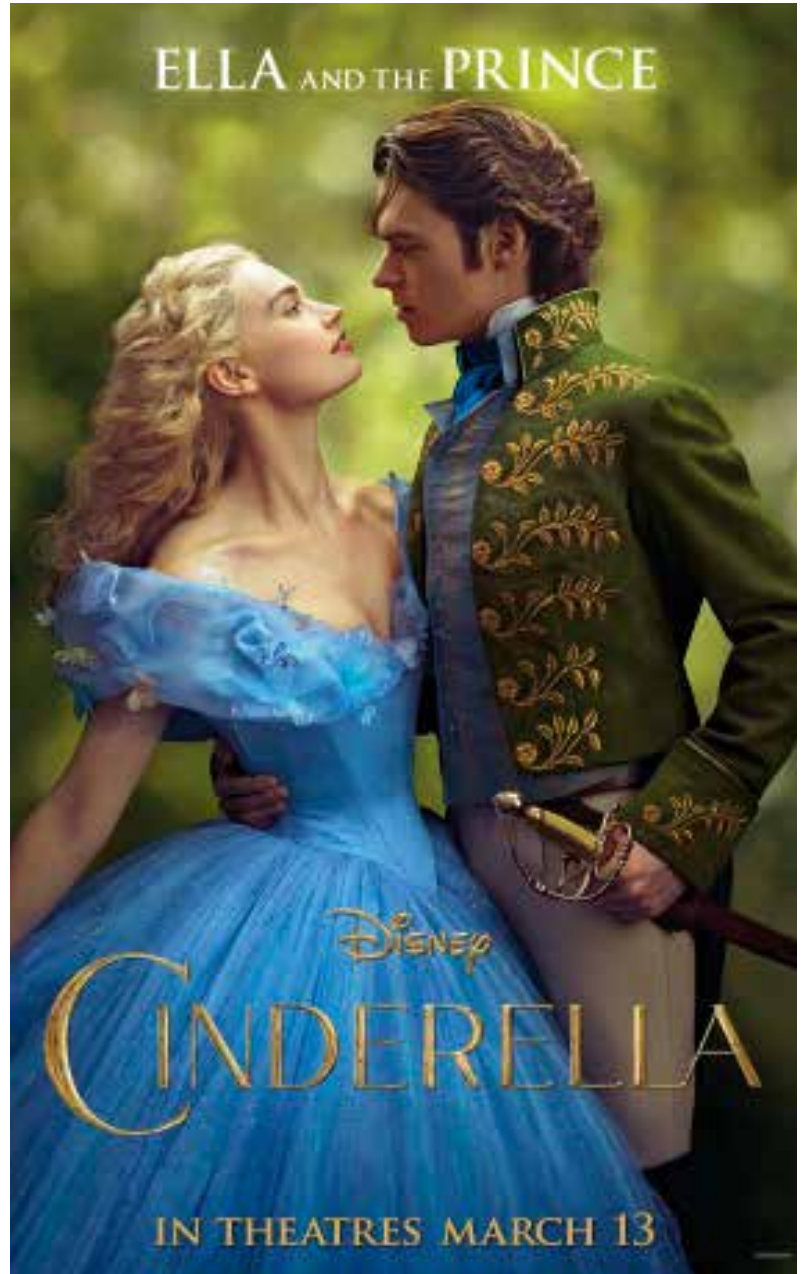
Weitz succeeds in writing a script that, when combined with the performances, mesmerizingly brings to life both nefarious villains (Cate Blanchett as Lady Tremaine) and kindhearted souls (Lily James as Cinderella) alike.

Expertly utilizing foils and other staples of the fantasy genre, Weitz crafts a crop of characters as colorful as the palettes used in their clothing.

With Weitz and Branagh to guide them, the cast of the film all turn out spectacular performances, but Cate Blanchett easily steals every scene she's featured in.

Her Lady Tremaine is stunningly vicious, instantly joining the ranks of the best Disney villains. She is regal and powerful, behaving more like a queen than Cinderella ever does. With a set of iconic costumes designed by Sandy Powell, Blanchett actually transcends mere Disney villainy, becoming a character reminiscent of the Golden Age of American cinema, channeling Bette Davis's femme fatale and Katharine Hepburn's stateliness. She is ruthless, using her cunning and beauty to achieve her goals at any cost.

She is unsettlingly wicked in the major confrontation with the



COURTESY: MOVIEPOSTERSDB.COM

meek and innocent Ella, a pivotal moment in revealing the true nature of their conflict. This moment is important as it reveals Lady Tremaine's backstory and motivations, an element absent from the original that fully allows her to become more than a one-dimensional villain.

In spite of Lady Tremaine's constantly cruel treatment, Cinderella radiates a virtually unwavering happiness throughout the film. In a laudable move by

the filmmakers, the audience fully understands where she draws her strength from in alternating heartwarming and heartbreaking moments with her mother (Hayley Atwell) and father (Ben Chaplin) in the early parts of the film.

At times, though, her kindness could almost be mistaken for weakness. Disney should have kept the "girl power" trend seen recently in "Brave" and "Frozen" by giving her a little more agency. Instead, the only female in the film with any real agency at all is portrayed as wicked.

Even so, Lily James believably embodies goodness, allowing Cinderella's door mat qualities to not be quite as disappointing. Both she and Hayley Atwell are effervescent, exuding an innocence and generosity with every soft smile and kind word. Both were excellent casting choices.

Other memorable performances from the film come from Helena Bonham Carter as The Fairy Godmother; Richard Madden as Prince "Kit" Charming; and Holliday Grainger and Sophie McShera as the two stepsisters, Anastasia and Drizella.

The notoriously quirky Bonham Carter is entertaining but surprisingly subdued in her role as Cinderella's magical guardian. Yet, her approach is spot-on, as this aids in maintaining the wizened air of the character in the original. She expertly anchors Cinderella's transformation, one of the most fun moments in the film.

NEW!
Molly Barr Trails & Ridge

Closest Location to Campus and the Square

2BR 3BR Spacious Apartments

NOW PRELEASING FOR FALL SEMESTER 2015

www.mollybarrtrails.com

CALL 662-816-8800 TO RESERVE YOUR NEW HOME.

TONIGHT:
Waka Flocka Flame
Doors @ 8

3/25:
Big KRIT

the lyric oxford

662.234.5333 • 1006 Van Buren Ave. • Box Office Hours Wed-Fri 12-5

An American soldier explains the importance of '91'

EMILY NEWTON
esnewto1@go.olemiss.edu

"Christmas," Brian Smyly said. "One of the most amazing things that happened on Christmas day was when we finally got to move into our one-man rooms, and I saw that Psalm 91 was hanging on my wall."

The life of an American soldier gives no guarantee about where he or she will end up working. For Smyly, that place was Afghanistan, in a small base that was often under attack. Behind his dog tags and bulletproof armor, Smyly said he believes something else protected him during his deployment.

After graduating from high school in Pontotoc in 2012, Smyly enrolled in Itawamba Community College and started his first semester in August. After two semesters, he was looking for something else to do.

"My friends talked me into it," Smyly said of the day he joined the army. "They came to my house. One was already in the army, and one wanted to get in. They told me how I could get scholarships for

school if I joined."

Joining the army was not a new thought to Smyly. His dad was retired from the Army National Guard, and Smyly said he had heard his dad's stories of the military since he was young. His dad often talked to his sons about joining the military but his mother, Angie, was wary of the idea.

"I asked him if he was sure and told him to call his father, who was out on the road driving trucks, before he did anything," Angie Smyly said.

After talking to his father, Smyly and his friends went to the local recruiting station and signed the papers to join the National Guard. He made things final when he went to Memphis and signed the rest of his recruiting papers days later.

"In Memphis, it took two days to get everything finalized and I was in," Smyly said.

Two weeks after getting back home from basic training and his advanced individual train-

ing, Brian's mother was the first one to receive the news that her son would be deploying to Afghanistan in just one month. It was spring, and Smyly had just turned 19. On the last Sunday he was home,

but I knew there was a reason and so, I read it at the end."

When he got home from church, Smyly packed his bags with a checklist the army had sent. Everything from his combat boots to a laptop that his parents bought him to Skype with them when he was in Afghanistan were spread on the dining room table of his parent's house. A camouflage bandana, given to Smyly from his troop's chaplain, lay amongst the chaos.

"I sat my purse down on the table and said, 'What is written on this thing?'" Angie Smyly said. "I picked it up and just started reading in the middle somewhere, and when I looked up, it was the chapter of Psalm 91."

After seeing his mother reading his bandana, Smyly reminded his mom that his job title in the army is "91 Bravo." The title is given to mechanics in the army, a job he wanted, so he could learn a skill to use for the rest of his life.

"I said, 'Son, that's confirmation that God's got you covered under Psalm 91, and 91 is your number,'" Angie Smyly said.

When a soldier is deployed, there is always a feeling of absence in the family, especially around the holidays. Smyly left in the spring of 2013 with the 858 Engineering Troop from Calhoun City. His mother promised that when she put up the Christmas tree that year she would not take it down until he got home.

"I didn't want him over there," Angie Smyly said. "I wanted him home for the holidays. I wanted him home for his birthday, the big 2-0."

Turning "the big 2-0" in Afghanistan when you are a soldier means you get lots of care packages, and you get to do 20 push-ups when your sergeant calls for a line formation, according to Smyly.

"I got about seven packages for my birthday, with zebra cakes," Smyly said. "Having something that is good like that is trading material if you have enough to barter with."

Whether bartering zebra cakes with fellow soldiers or

He will cover you with his feathers, and under his wings you will find refuge; his faithfulness will be your shield and rampart.

— Psalm 91:4

members of the small, Baptist church he attends gathered to say their goodbyes. His mother stood and shared memories of Brian along with a special Bible scripture that was close to her heart.

"About two or three minutes before I actually went up to the podium, the Lord spoke to my heart, and he told me to read Psalm 91 to Brian," Angie Smyly said. "I didn't know why the Lord put that on my heart,

SEE '91' PAGE 6



St. Patrick's Day CELEBRATION

PUT ON YOUR GREEN AND ENJOY BEER SPECIALS AND FREE FOOD



The Liborary
120 South 11th Street 662.234.1411

PLEASE DRINK RESPONSIBLY



'CINDERELLA' continued from page 4

Madden is confident and dreamy, channeling a milder version of his previous role as King Robb Stark in HBO's "Game of Thrones." Of the stepsisters, McShera shines as the silly, vapid Drizella as she delivers some of the most humorous lines in the film, becoming likable despite being an antagonist. Derek Jacobi as the ailing King, and Stellan Skarsgård as the scheming Grand Duke round out the rest of the supporting cast.

Perhaps one of the biggest strengths of the film comes from where it departs from the original.

Disney's signature songs are absent, with only one lullaby "Lavender Blue" emerging twice — though, the song does play a key role in the plot. The talking mice are rightfully demoted from human-like sentience to an adorable, silent role. Cinderella's relationship with Prince Charming is

given more attention, allowing a real connection to be made, and the politics of the kingdom are fleshed out, suggesting more is at stake than just Cinderella and Charming meeting again. These changes allow the film to lose childlike qualities, resulting in a film that can appeal to multiple generations.

Also, the film is a visual treat.

Dante Ferretti's production design and Sandy Powell's costume design both create a vivid world, popping with color. The royal palace is visually stunning, adding an enchanting element to the showstopping moment Cinderella arrives at the ball. Powell's costume design — especially for Lady Tremaine and Cinderella — serves to define each character, enriching the film's world even further. Both Cinderella's ball gown and wedding dress will be immortalized in Disney history for generations to come, as they deserve to be.

Overall, "Cinderella" is an excellent remake, justifying its existence by being as truly good as the titular character.

'91' continued from page 5

doing push-ups for his sergeant on his birthday, nothing could compare to the gift Smyly found on Christmas day that year.

"I transferred to a smaller base than the one that I was at," Smyly said. "It was Christmas day, and when I opened the door to my one-man room, Psalm 91 was typed on a piece of paper and hanging on my wall."

Amazed at the Scripture hanging on the wall in his new bedroom, Smyly put his belongings down and snapped a picture of the piece of paper hanging on his wall.

"It (Psalm 91) appeared a lot when I was over there, more times than I thought it was going to," Smyly said.

Brian finally returned home to Pontotoc in the early morning hours on July 2, 2014.

Since he was a little boy, Smyly said his mother's side of the family had always celebrated July 4 like it was Christmas. This year, though, it was

"I told him that I would keep the Christmas tree up until he got home, and I did," Angie Smyly said. "We had birthday in July, Christmas in July and July 4 all at once."

At his homecoming celebra-

tion, Smyly told stories of his base being attacked and the moments he ducked down into bunkers to all the family and friends at his celebration party, Angie Smyly said she knew he would make it home all along, and she knew why.

"I don't believe in coincidences," Angie Smyly said. "I believe we ask God to do something, and he is faithful and just does what we ask him to do. We just have to make sure that we totally trust and believe him."



Brian Smyly in his uniform before being deployed to Afghanistan.

COURTESY ANGIE SMYLY

2X TUESDAY DEAL BUY 1 GET 1 FREE

ORDER ONLINE WWW.DOMINOS.COM

OPEN LATE 236-3030

*Based on Regular Menu Prices. not Valid on Artisan Pizzas. PAN PIZZA EXTRA, MINIMUM DELIVERY \$7.99

- ACROSS**
- 1 Speck of dust
 - 5 Film terrier
 - 9 Hack
 - 14 Comics penguin
 - 15 Kind of lens
 - 16 Stan's cohort
 - 17 Freely
 - 19 Any old things
 - 20 Wheel buy (2 wds.)
 - 21 Newsman — Abel
 - 22 Keats' saint
 - 23 Dwelled
 - 25 One-sidedness
 - 26 Width of a cir.
 - 27 Big woolly animal
 - 30 Ruminated
 - 33 Blender button
 - 34 911 responder
 - 36 Late tennis great
 - 37 Emulated a siren
 - 38 Running wild
 - 39 Drink with scones
 - 40 Violin parts
 - 41 — Rose Lee
 - 42 Like new shoes
 - 44 Do Easter eggs
 - 45 M, to Einstein
 - 46 Oater hero
 - 50 Pool dimension
 - 52 Numbers game

- DOWN**
- 1 Grinding tooth
 - 2 Put one's two cents in
 - 3 Band horns
 - 4 Wind dir.
 - 5 Flowering shrub
 - 6 Well-built
 - 7 Enameled metal
 - 8 Singer — Grant
 - 9 Sting, e.g. (2 wds.)
 - 10 Maria Conchita —
 - 11 Eye shade
 - 12 Flour holders
 - 13 Da or ja
 - 18 Started over
 - 22 Targeted
 - 24 — fixe
 - 25 Makes public
 - 27 Hazy
 - 28 Short-term worker

PREVIOUS PUZZLE SOLVED

N	E	V	A	G	U	A	S	T	A	B			
J	A	X	A	C	A	S	S	C	H	I	R	P	
O	V	A	L	H	I	S	T	R	I	O	N	I	C
G	E	M	I	N	I	R	I	O	U	T	E	S	
S	E	E	P	R	O	T	S						
R	E	W	E	A	V	E	S	F	R	A	C	A	S
A	L	A	L	E	A	N	S	U	N	L	I	T	
J	U	G	S	S	C	O	W	S	D	O	M	O	
A	D	E	P	T	H	O	O	H	A	N	E	O	
S	E	R	I	A	L	P	R	O	V	O	K	E	D
N	O	A	H	D	R	E	G						
A	L	T	O	D	E	N	E	C	L	A	I	R	
P	E	R	F	I	D	I	O	U	S	E	B	A	Y
R	E	E	F	S	S	I	T	U	R	E	N	E	
R	E	S	T	T	R	A	P	S	T	S			

- 3-17-15 © 2015 UFS, Dist. by Univ. Uclick for UFS
- 29 MD employers
 - 30 Bathroom item
 - 31 Makes the most of
 - 32 Hoops nickname
 - 33 Ice hockey gear
 - 35 Upper atmosphere
 - 37 Pet shop buy
 - 38 Nay opposites
 - 40 Least messy
 - 41 Pita treats
 - 43 Sports official
 - 44 Mr. Fahrenheit
 - 46 Danke, in Dijon
 - 47 Split — (nitpick)
 - 48 Booster rocket
 - 49 Unlucky gambler
 - 50 Ruby and Sandra
 - 51 Historical periods
 - 52 Genghis —
 - 54 — matter of fact
 - 55 Tax pro
 - 56 Trim a doily

1	2	3	4	5	6	7	8	9	10	11	12	13
14				15					16			
17				18					19			
20				21				22				
23			24				25					
			26				27			28	29	
30	31	32				33				34		35
36				37						38		
39				40						41		
	42		43					44				
			45				46			47	48	49
	50	51					52				53	
54							55			56		
57							58			59		
60							61			62		

SUDOKU®

Puzzles by KrazyDad

2		3	5					
							2	
7			1				8	
	6			9		7		
		9	6		8	1		
		4		7			5	
		1			3			7
	4							
					4	3		9

HOW TO PLAY

Complete the grid so that every row, column and 3x3 box contains the numbers 1 through 9 with no repeats.

DIFFICULTY LEVEL

INTERMEDIATE

9	6	1	8	4	2	7	5	8	6
5	8	2	9	1	6	7	4	3	8
7	6	4	3	5	8	1	2	9	6
9	5	6	1	7	2	4	3	8	6
2	4	1	8	3	6	9	7	5	8
8	3	7	5	9	4	2	1	6	8
3	9	8	2	4	1	6	5	7	8
4	1	2	5	7	3	6	8	9	4
7	4	6	9	8	5	3	1	2	7

COLUMN

Do the Rebels compare to the 2012-2013 team?

DYLAN RUBINO

thedmsports@gmail.com

We all remember the Marshall Henderson moments from the 2012-13 Rebel team that made it to the NCAA Tournament.

There's the gator chomp to the crowd in Nashville after the Rebels clinched their second SEC Tournament championship, their first since 1981. There's the game-tying shot to send the game against Vanderbilt into overtime, where the Rebels ended up winning. And who could not forget Henderson celebrating in front of a riled up Auburn crowd?

That's the biggest difference between that Ole Miss team and this year's tournament team. There's no Henderson, Derrick Millinghaus, Reginald Buckner, Murphy Holloway and Demarco Cox.

No one saw the run the Rebels had in 2013 coming.

No one expected them winning three games in the SEC Tournament, especially against Missouri, Vanderbilt and Florida. They were definitely not predicted to win the SEC Tournament completely. Then watching them upset Wisconsin in the second round of the NCAA Tournament was something no one saw coming.



PHOTO COURTESY: ELLIOTT MILLER

The Rebels practice Monday in preparation for their game against BYU tonight in Dayton, Ohio.

Can the 2014-15 Rebels make a similar run in the the NCAA Tournament?

It does not look encouraging as of right now.

The Rebels started out strong in conference play, going 10-4 in the SEC, including a six-game winning streak.

The way the Rebels finished off the season, however, is what put a question mark on the Rebels and had Ole Miss fans on the edge of their seats on Selection Sunday. Losing four of their last five games of the season, including a loss in their first game of the SEC Tournament against South Carolina, had Ole Miss on

the brink of playing in the NIT.

It was a different kind of drama in 2013 than it was this year.

The 2012-13 team was not expected to make the NCAA Tournament with the resume they had, but a run to win the SEC tournament put them in the field of 68. This year's team was expected to make the field with ease, but how the team finished the season put them in danger of not seeing the Big Dance at all. The 2012-13 Rebels had to win to get in, and this year's team stumbled to the finish line.

The 2012-13 team had size and leadership in the front-court. With seniors Reginald Buck-

ner and Murphy Holloway leading the way, the Rebels were a force on the glass and kept the team composure under control at crucial moments in games. Holloway cleaned the glass for the Rebels and was the main low post scoring threat, which freed Henderson to make 3-pointers. Buckner was the shot-blocker at center who kept the paint protected.

There isn't that same presence with Ole Miss this season. Senior M.J. Rhett and sophomores Dwight Coleby and Sebastian Saiz man the frontcourt but don't have the same physical presence Holloway and Buckner did.

The style of play on offense is similar between the two teams. Both teams were led by ball-screen shooters in Henderson on the 2012-13 team and junior guard Stefan Moody this year.

Henderson was Ole Miss. The success of the team depended on how well Henderson could shoot the ball from three. However,

there isn't as much pressure on Moody to carry the team as Moody can score shooting threes off screens and standing still, but Moody is also an effective driver to the hoop and can score in a variety of ways.

Senior guard Jarvis Summers was expected to be the leader the Rebels needed this season, but Summers has underwhelmed this season, shooting 34 percent from the field. The senior leader in the backcourt was looked at to carry the team, but Moody has taken over the role.

Both teams had depth coming off the bench, but this year's team has found more production from the rest of the players on the bench than it did two years ago.

Another difference is free throw shooting. The Rebels are one of the best free throw shooting teams in the country this season while two years ago, free throws doomed the Rebels in the SEC and in their third round NCAA Tournament loss to La Salle.

You can find many similarities and differences between the two teams. The senior leadership, rebounding, shot-blocking presence and scoring ability is what made the 2012-13 team special.

The Rebels could possibly make a run this year. Just don't expect it to be like two years ago.

CLASSIFIEDS INFORMATION

To place your ad in The Daily Mississippian Classifieds section, visit:
<http://www.thedmonline.com/classifieds>.

The DEADLINE to place, correct or cancel an ad is 12 p.m. one day in advance. The Daily Mississippian is published Monday through Friday when school is in session except during the summer session which is Tuesday through Thursday.

Classified ads must be prepaid. All major credit cards accepted. No refunds on classified ads once published.

RATES:
- \$0.25 per word per day
- 15-word minimum
- No minimum run

Additional Features (Web & Print):
Jumbo Headline - \$3
Big Headline - \$2
Bold Text - extra \$0.50 per word

To place your ad online: www.thedmonline.com/classifieds

The DM reserves the right to refuse ads that appear to offer unrealistic or questionable products or services.

201 BISHOP HALL • 662.915.5503

CONDO FOR SALE

HIGH POINTE CONDO for sale or lease: spacious 3 bedroom/3 bathroom condo, great location, gated community, pool access. Six month/one year lease: \$1650/month. To buy: \$135,000.00 Contact Samantha at samantha@rebel-rags.net or by phone: (662)404-1312

APARTMENT FOR RENT

LARGE 2 BEDROOM/2.5 BATH townhouse with W/D included. No pets. 1 Year lease. Quiet. \$500 security deposit. Call (662)234-0000

MOLLY BARR TRAILS now leasing for fall. Spacious 2BR/2BA with all appliances, W/D, fitness room and swimming pool. \$575 per person includes cable, internet, water, sewer services. Walking distance to campus! (662)-816-8800 www.mollybarrtrails.com

HOUSE FOR RENT

3BEDROOMS NOW LEASING!

Saddle Creek/ Shiloh/ Willow Oaks/ Davis Springs \$1200mo/ \$400pp. Pet Friendly, New Paint/ trim/ carpet-1/4 mile to Campus/ Pics/ FriendUs @facebook.com/ oxford.rentals1 662-278-0774

CONDO FOR RENT

CONDO FOR RENT Esplanade Ridge 2BR 21/2 Bath Unfurnished, Available August 2015 (662)822-4646

2BED/2BATH CONDO available for Fall. W/ D, dishwasher, garbage disposal, INTERNET INCLUDED, tanning, tennis, fitness, volleyball, walking track. One mile south of campus. \$895.00. JUSTIN (662)542-0611

WEEKEND RENTAL

GRADUATION WEEKEND 3 BR 2 BATH house, nine minutes from campus, two nights, Friday and Sat., no pets, no smoking, \$600.00, call 662-234-7507.

WEEKEND RENTALS Football, Baseball, Graduation, exploring Oxford, weddings, you name it! (662)801-6692

BUSINESS OPPORTUNITIES

BUSINESS OPPORTUNITIES COFFEE IS THE SAFEST business to start. Recession Proof. Just ask Sbucks! Weekly Pay. (901)221-4141

THE STUDENT MEDIA CENTER

is currently accepting applications for an advertising sales representative. Position is available now and for 2015-2016 school year

MUST have at least two semesters to complete before graduating.

MUST have strong communication skills and be comfortable interacting with local business professionals.

MUST be highly motivated, organized, dependable, and attentive to detail.

PREVIOUS sales or retail experience preferred.

Earnings are based on commission. This is excellent work experience for a resume or future employer.

Stop by 201 Bishop Hall to pick up an application and job description or go to theDMonline.com and click on apply to download. Applications can be dropped off or sent to dmads@olemiss.edu.

Rebels set for First Four showdown against BYU tonight

BROWNING STUBBS

bbstubs@go.olemiss.edu

Ole Miss is back in the NCAA Tournament and will have a date with No. 11 seed BYU in the play-in game in Dayton, Ohio, at the University of Dayton Arena tonight. It's just the second time since 2002 that the Rebels have made the Big Dance.

After losing four out of their last five games, many experts didn't believe the Rebels belonged in the tournament. Nevertheless, they are here and have something big to prove. A win in the NCAA Tournament for the Rebels would put the cherry on top for Ole Miss as the expectations weren't that high before the season. A win would also gain momentum going into the new Pavilion at Ole Miss next season.

It's been a good season as Ole Miss won 20 games and picked up big road wins over Oregon and Arkansas. Now, Ole Miss has a golden opportunity to show why they were deserving of being selected into the field.

However, this task won't be easy as they're taking on a Cougar squad that went on the road on February 28th to defeat then No. 3 Gonzaga 73-70. The Cougars are led by the guard combo of senior Tyler Haws and junior Kyle Collinsworth that have an advantage on senior guard Jarvis Summers and junior guard Stefan Moody due to their height. Ole Miss may be an underdog, but anything can happen in the NCAA Tournament.

One interesting statistic regarding this matchup is that a First Four team has won multiple games in the tournament each year since the First Four began



PHOTO COURTESY: ELLIOTT MILLER

Aaron Jones dunks the ball during the Rebels' Monday evening practice in preparation for their game tonight against BYU.

in 2011, including two Sweet 16 teams and one Final Four team. The winner of this game will face No. 6 seed Xavier in the second round on Thursday at 4:10 p.m. C.T. in Jacksonville, Florida.

IMPACT PLAYER OLE MISS - STEFAN MOODY

It all comes down to the man who's brought Ole Miss this far, and that's junior guard Stefan Moody. For the most part, Moody was a sensation this year with his unique shot-making ability and his strong defense.

However, in his last five games, he has struggled. Moody is only shooting around 26 percent from the field as teams have started to figure out how to defend his lights-out shooting. In order for Ole Miss to have any chance to advance to

play Xavier, Moody must be efficient and play smart on the defensive end. Ole Miss head coach Andy Kennedy must get Moody to run off his traditional baseline screens to get wide open to knock down shots. Moody's effectiveness could also impact Summers, who needs to feed off Moody's energy in order to avoid playing in his final collegiate game.

IMPACT PLAYER BYU - TYLER HAWS

Senior shooting guard Tyler Haws is one of the most deadly scorers in the nation, as he ranks fourth in the country in scoring at 21.9 points per game. Recently this year, Haws passed BYU great Jimmer Fredette on the BYU all-time scoring list. Haws is an excellent all-around player as he

shoots close to 48 percent from the field and is an amazing free throw shooter at 87 percent on the year. Haws has played in all 34 of the Cougar's games this year, scoring in double-figures in all but one. Needless to say, this guy can score from all areas on the floor. It is crucial for junior guard Martavious Newby and senior guard LaDarius White to hold him in check as he has potential to light up the scoreboard early.

WHEN: 8:10 P.M. C.T.
WHERE: UNIVERSITY OF DAYTON ARENA
TV: TRU TV

For continuing coverage of Ole Miss men's basketball during the NCAA tournament, follow @browningstubbs and @thedm_sports on Twitter.



Micro Wrestling



SATURDAY - 6:05 PM

College Night

Save \$2 on select tickets!

Show your college, fraternity or sorority apparel or college ID at the Landers Center Box Office

GROUP TICKETS START AT \$8

ASK ABOUT ALL-INCLUSIVE SEATS!

Call 662-342-1755 to book your group outing!



RiverKings.com



34611

NOW ACCEPTING OLE MISS Flex

PAPA JOHN'S
Better Ingredients. Better Pizza.

PROUD PARTNER with OLE MISS DINING
Sun.-Wed. 10:30am-1:00am, Thurs.-Sat. 10:30am-2:00am

Rated #1
Customer Satisfaction
Among QSR Pizzerias in the American Customer Satisfaction Index
ACSI 2014

31771